

MAEER's

MIT Arts, Commerce and Science College,
Alandi (D), Pune – 412 105.



**NBA or any other certification received with program
specifications**

INDEX

Sr. No.	Year	Particulars	Page No.
01	2014-15	NIL	-
02	2015-16	Best College Award for AY 2015-16 by SPPU for – SWA in rural areas	3

03	2016-17	Best College Award for AY 2016-17 by SPPU for – SWA in rural areas	4
04	2017-18	1) INDIA TODAY - MDRA Best College Ranking 2018 <ul style="list-style-type: none"> ➤ BBA-CA 2nd in Pune & 18th in INDIA ➤ BSC(CS) 3rd in Pune & 94th in INDIA 2) University Level Best College Award for 2017-18 by SPPU for conducting Student Development Activities	6
05	2018-19	1) Ranked “India’s 10 Best Institutions for Computer Science Studies 2019” by Knowledge Review Magazine 2) Ranked “India’s 10 Best Institutions for Commerce Studies 2019” by Knowledge Review Magazine 3) INDIA TODAY - MDRA Best College Ranking 2019 <ul style="list-style-type: none"> ➤ BBA-CA 2nd in Pune & 28th in INDIA ➤ BSC(CS) 3rd in Pune & 90th in INDIA ➤ BBA 6th in Pune & 72th in INDIA 	13

MIT Arts, Commerce and Science College

awarded with

“BEST COLLEGE AWARD”

REGIONAL LEVEL – PUNE RURAL for

AY 2015-16

By Savitribai Phule Pune University, Pune.



MIT Arts, Commerce and Science College

awarded with

“BEST COLLEGE AWARD”

REGIONAL LEVEL – PUNE RURAL for

AY 2016-17

By Savitribai Phule Pune University, Pune.



MIT Arts, Commerce and Science College

awarded with

“BEST COLLEGE AWARD”

REGIONAL LEVEL – PUNE RURAL for

AY 2017-18

By Savitribai Phule Pune University, Pune.



Mr. Shriram N. Kargaonkar

awarded with

“BEST STUDENT DEVELOPMENT OFFICER”

REGIONAL LEVEL – PUNE RURAL

AY 2017-18

By Savitribai Phule Pune University, Pune.





**Maharashtra Academy of Engineering and
Educational Research's**

**MIT Arts, Commerce and Science College, Alandi
(D) – 412 105.**

INDIA TODAY-MDRA

2018

SPECIAL ISSUE

www.indiatoday.in

JUNE 4, 2018 ₹60

INDIA TODAY

THE BEST COLLEGES OF INDIA

THE ALL-NEW
COMPREHENSIVE
INDIA TODAY-MDRA
SURVEY WITH
NEW STREAMS



Among The Top Engineering Colleges of India



GJB
GURUKUL
JYOTI
BHAWAN

MANAV RACHNA EDUCATIONAL INSTITUTIONS



RANKED AMONGST THE TOP UNIVERSITIES GLOBALLY

QS and THE are the world's leading Global University Rankings Organisations

Only very few Indian Universities have achieved to be part of both the rankings.



AMONG TOP 1.5% OF UNIVERSITIES IN ASIA
QS 2018 Ranking



AMONG TOP 3.5% OF UNIVERSITIES WORLDWIDE
THE 2018 Ranking

A UNIVERSITY WITH AN EXCELLENT TRACK RECORD OF 36,000 CAMPUS PLACEMENTS

- Over 2,700 campus placements for 2018 passing out batch
- No. of companies visited in 2017-18 : 993
- Alumni earning salary package of over Rs. 1 crore p.a.
- Placements in leading Fortune 500 companies like Amazon, Google, Microsoft, Nestle, Deloitte, IBM
- Students also selected for higher studies in top global universities like Harvard, Stanford, John Hopkins, Carnegie Mellon, NUS
- Recruitment in leading Govt. Organisations like DRDO, ONGC, Indian Oil, ISRO, BARC, NTPC, BHEL
- Students selected to pursue Ph.D in top global universities right after Graduation



Asia's only not-for-profit university to get US Regional Accreditation



The Gold Standard of Accreditations Globally

Amity University Campuses in Noida, Gurgaon, Greater Noida, Gwalior, Jaipur, Kolkata, Lucknow, Mumbai, Patna, Raipur & Ranchi offer over 300 UG & PG Degrees in: Acting | Actuarial Science | Aerospace Engg. | Aeronautical & Automobile Engg. | Agriculture | Animation | Anthropology | Applied Science | Architecture | Avionics | Banking & Insurance | Biotechnology | Commerce | Communication | Computer Sc./IT | Design | Earth Sc. | Economics | Education | Engineering | English Literature | Environmental Science | Fashion | Film and TV Production | Finance | Fine Arts | Food Technology | Forensic Science | Geo Informatics System & Remote Sensing | Health Sciences | Horticulture | Hospitality | Hospital Admin. & Public Health | International Business | International Relations | Language | Law | Liberal Arts | Logistics & Supply Chain Mgmt. | Management | Marine Sc. | Medical and Allied Sciences | Microbial Sc. | Molecular Medicine & Stem Cell Research and Cancer Biology | Nanotechnology | Natural Resources & Sustainable Development | Neuropsychology & Neurosciences | Nuclear Sc. & Technology | Nursing | Occupational Therapy | Ocean-Atmospheric Sc. & Tech. | Performing Arts | Pharmacy | Physical Education | Physiology | Physiotherapy | Post Harvest Technology & Cold Chain Mgmt. | Psychology & Behavioural Science | Public Policy | Real Estate & Urban Infrastructure | Sanskrit Studies | Social Science | Solar & Alternate Energy | Space Science | Special Education | Telecom | Travel & Tourism | Virology & Immunology | Wildlife Sc.

Application form and details on programmes, eligibility, fees & campuses offered at, are available at www.amity.edu

AMITY EDUCATION GROUP HAS CAMPUSES IN

- INDIA: • Noida (New Delhi NCR) • Greater Noida • Gurgaon • Jaipur • Lucknow • Mumbai • Gwalior • Kolkata • Raipur • Ranchi • Patna • Ahmedabad • Bangalore • Bhubaneswar • Chandigarh • Chennai • Hyderabad • Indore • Kochi • Pune
- OVERSEAS: • London • Dubai • New York • Singapore • Mauritius • China • Abu Dhabi • South Africa • Amsterdam • Romania

CITYWISE TOP 3 COLLEGES

BENGALURU

1. DEPARTMENT OF SCIENCES, CHRIST (DEEMED TO BE UNIVERSITY)
2. MOUNT CARMEL COLLEGE (AUTONOMOUS)
3. ST JOSEPH'S COLLEGE (AUTONOMOUS)

CHENNAI

1. LOYOLA COLLEGE (AUTONOMOUS)
2. MADRAS CHRISTIAN COLLEGE
3. STELLA MARIS COLLEGE (AUTONOMOUS)

DELHI

1. MIRANDA HOUSE
2. HINDU COLLEGE
3. ST STEPHEN'S COLLEGE

HYDERABAD

1. ST FRANCIS DEGREE COLLEGE FOR WOMEN
2. ST ANN'S COLLEGE FOR WOMEN (AUTONOMOUS)
3. ST JOSEPH'S DEGREE & PG COLLEGE

MUMBAI

1. MITHIBAI COLLEGE
2. ST XAVIER'S COLLEGE (AUTONOMOUS)
3. KISHINCHAND CHELLARAM COLLEGE

PUNE

1. SIR PARASHURAMBHAU COLLEGE

2. ABEDA INAMDAR SENIOR COLLEGE OF ARTS, SCIENCE AND COMMERCE
3. MIT ARTS, COMMERCE & SCIENCE COLLEGE

KOLKATA

1. RAMAKRISHNA MISSION VIDYAMANDIRA
2. VIVEKANANDA COLLEGE MADHYAMGRAM
3. BARRACKPORE RASTRAGURU SURENDRANATH COLLEGE

CHANDIGARH

1. GOSWAMI GANESH DUTTA SANATAN DHARMA COLLEGE
2. POST GRADUATE GOVERNMENT COLLEGE FOR GIRLS
3. MEHR CHAND MAHAJAN DAV COLLEGE FOR WOMEN

AHMEDABAD

1. ST XAVIER'S COLLEGE (AUTONOMOUS), AHMEDABAD
2. M.G. SCIENCE INSTITUTE
3. GOVERNMENT SCIENCE COLLEGE

JAIPUR

1. ST WILFRED'S PG COLLEGE
2. PODDAR INTERNATIONAL COLLEGE
3. SCHOOL OF LIFE AND BASIC SCIENCES, JAIPUR NATIONAL UNIVERSITY

TOP 5 COLLEGES

IN INTAKE QUALITY AND GOVERNANCE

1 MIRANDA HOUSE
Delhi

2 HINDU COLLEGE
Delhi

3 ST. STEPHEN'S COLLEGE
Delhi

4 KIRORI MAL COLLEGE
Delhi

5 ST. XAVIER'S COLLEGE
Mumbai

RATIO OF MALE TO FEMALE STUDENTS

RANK	RATIO
TOP 10	1.1
TOP 25	0.8
OVERALL	0.7



generally don't hasten to enter the job market after graduation—their progression is towards research institutions of higher learning. The college has thought through every little thing—from the labs to the space for conducting research activities and collaborative work where students love to spend hours working on several projects.

There is no dearth of opportunities for students spending their three years at Miranda. The institute

curates programmes such as the science conclave and numerous seminars. Students from the science departments also visit research organisations to get training, undertake field trips, excursions, summer projects, internships that develop their intellectual rigour, practical, analytical and problem-solving skills. Having completed their BSc from the college, students from Miranda go out into the real world equipped with the ability to

apply the knowledge that they have acquired in its hallowed classrooms. Ask Manisha Yadav, who was part of the 2016 batch of chemistry students in the college. "Miranda helped us build a whole empire of abilities," she says. "Not only did the college teach us to be self-sufficient but it also fortified us with the skills to manage the personal-professional sphere with equal aplomb. Miranda was the place I fell in love, both with people and with myself." ■

OVERALL RANK 2018	NAME OF COLLEGE	INTAKE QUALITY & GOVERNANCE	ACADEMIC EXCELLENCE	INFRASTRUCTURE & LIVING EXPERIENCE	PERSONALITY & LEADERSHIP DEVELOPMENT	CAREER PROGRESSION & PLACEMENT	OBJECTIVE SCORE	PERCEPTUAL SCORE	OVERALL SCORE
66	SARDAR PATEL MAHAVIDYALAYA, CHANDRAPUR, MAHARASHTRA	146.4	143.3	74.9	26.2	62.3	453.1	288	741.1
67	GOBI ARTS & SCIENCE COLLEGE, ERODE	125.7	112.5	114.3	70.3	77.8	500.6	181.9	682.5
68	ABEDA INAMDAR SR COLLEGE OF ARTS, SCIENCE & COMMERCE, PUNE	171	139.4	96.6	26.4	58.9	492.3	167.9	660.2
69	JUSTICE BASHEER AHMED SAYEED COLLEGE FOR WOMEN, CHENNAI	164.3	138.2	81.8	83.9	86	554.2	77.6	631.8
70	RATHINAM COLLEGE OF ARTS & SCIENCE, COIMBATORE	99.5	138.8	122.1	118.1	89.7	568.2	59.1	627.3
71	GOVERNMENT COLLEGE (AUTONOMOUS), ANANTAPUR, ANDHRA PRADESH	141.8	146.4	99.6	69	86.7	543.5	80.7	624.2
72	GOVT DEGREE COLLEGE FOR WOMEN (A), BEGUMPET, HYDERABAD	145.7	114.3	83.2	104.2	102.4	549.8	65.1	614.9
73	KASTURBA GANDHI DEGREE & PG COLLEGE FOR WOMEN, SECUNDERABAD	144.9	101	82.7	56.3	62.8	447.7	145.6	593.3
74	SCHOOL OF LIFE & BASIC SC., JAIPUR NATIONAL UNIVERSITY, JAIPUR	132.4	165.6	123.2	96.3	74	591.5	0	591.5
75	KONGU ARTS AND SCIENCE COLLEGE, ERODE	141.7	118.8	110.2	82.1	80.7	533.5	49.4	582.9
76	PRAMUKH SWAMI SCIENCE & H.D. PATEL ARTS COLLEGE, KADI, GUJARAT	163.1	149.8	125.2	67	77.3	582.4	0	582.4
77	ACHARYA BANGALORE BUSINESS SCHOOL, BENGALURU	125.7	145.9	124.5	111.8	73.9	581.8	0	581.8
78	DEV SAMAJ COLLEGE FOR WOMEN, FERDZEPUR	150.6	142.7	84.1	76.1	110.4	563.9	0	563.9
78	STANI MEMORIAL PG COLLEGE, JAIPUR	101.8	154.1	110	99.4	94.1	559.4	0	559.4
80	MARIS STELLA COLLEGE (AUTONOMOUS), VIJAYAWADA	154.3	133.9	114.6	78.8	77.5	559.1	0	559.1
81	S.M. PATEL COLLEGE OF HOME SCIENCE, VALLABH VIDYANAGAR, GUJARAT	129.6	126.1	85.5	112.1	97.5	550.8	0	550.8
82	SACRED HEART COLLEGE (AUTONOMOUS), TIRUPATTUR, TAMIL NADU	172.4	152.3	111.1	45.6	64.7	546.1	3.5	549.6
83	CHEVALIER T. THOMAS ELIZABETH COLLEGE FOR WOMEN, CHENNAI	150.4	110.9	107.6	99	77.7	545.6	0	545.6
84	MUTHAYAMMAL COLLEGE OF ARTS & SCIENCE, NAMAKKAL, TAMIL NADU	118.6	130.3	115	77.8	98	539.7	3.5	543.2
85	NEHRU ARTS & SCIENCE COLLEGE, COIMBATORE	97.4	138.1	114.1	93.3	98.7	541.6	0	541.6
86	N.V. PATEL COLL. OF PURE & APPLIED SCIENCES, VALLABH VIDYANAGAR	108.8	141.4	99.4	102.5	83	535.1	3.5	538.6
87	GURU NANAK COLLEGE OF ARTS, SCIENCE & COMMERCE, MUMBAI	137.7	129.9	115	96.9	55.5	535	0	535
88	DR R.V. ARTS AND SCIENCE COLLEGE, COIMBATORE	98.4	75.2	101.5	52.6	76.1	403.8	128.8	532.6
89	KOVAL KALAIMAGAL COLLEGE OF ARTS & SCIENCE, COIMBATORE	123.9	108.2	123.8	112.8	62.7	531.4	0	531.4
90	SONOPANT DANDEKAR SHIKSHAN MANDLI'S M.H. MEHTA SCIENCE COLLEGE, PALGHAR, MAHARASHTRA	156.5	143.7	112.8	64.6	46.4	524	0	524
91	DR S.N.S. RAJALAKSHMI COLLEGE OF ARTS & SCIENCE (AUTONOMOUS), COIMBATORE	129.3	94.9	121.2	81.5	91.3	518.2	0	518.2
92	SRI KANYAKA PARAMESWARI ARTS & SCIENCE COLLEGE FOR WOMEN, CHENNAI	142.2	97.8	88.3	114.7	64.4	507.4	0	507.4
93	B.B.K. DAV COLLEGE FOR WOMEN, AMRITSAR	123.8	145.2	92.4	70.5	48.7	480.6	0	480.6
94	MIT ARTS, COMMERCE & SCIENCE COLLEGE, PUNE	104.9	100.1	104.1	90.8	68.3	468.2	0	468.2
95	JNAN VIKAS MANDAL'S DIWALI MAA DEG. COLL. OF SC., NAVI MUMBAI	139	120.4	78.5	72.4	54.3	464.6	0	464.6
96	BARRACKPORE RASTRAGURU SURENDRANATH COLLEGE, KOLKATA	130.4	118.4	79.7	42.6	93.3	464.4	0	464.4
97	DAV COLLEGE, HOSHIARPUR	120	107.2	101.4	66.3	59.5	454.4	0	454.4
98	HINDUSTAN COLLEGE OF ARTS & SCIENCE, CHENNAI	94.1	119.9	106.5	49.6	47.5	417.6	0	417.6
99	KANCHAN SINGH BHOOLI DEVI MAHAVIDYALAYA, KANPUR DEHAT	107.6	48.5	82.9	54.4	100.3	393.7	0	393.7
100	CAUVERY DEGREE COLLEGE, GONKOPPAL, KARNATAKA	109.6	40	111.8	54.7	59.8	375.9	0	375.9

NB: Institutes like Sri Venkateswara College, New Delhi; Kamala Nehru College, New Delhi; Fergusson College, Pune and Cotton College, Guwahati did not submit their objective data on time or refused to participate. All scores have been rounded off to one decimal place. Those colleges not ranked during perceptual survey have got nil marks for perceptual score

OVERALL RANK 2018	NAME OF COLLEGE	INTAKE QUALITY & GOVERNANCE	ACADEMIC EXCELLENCE	INFRASTRUCTURE & LIVING EXPERIENCE	PERSONALITY & LEADERSHIP DEVELOPMENT	CAREER PROGRESSION & PLACEMENT	OBJECTIVE SCORE	PERCEPTUAL SCORE	OVERALL SCORE
		210	270	240	180	300	1200	800	2000
1	SYMBIOSIS INSTITUTE OF COMPUTER STUDIES & RESEARCH, PUNE	161.1	200.5	177.3	146.1	240.9	925.9	762.7	1,688.6
2	DEPARTMENT OF COMPUTER SCIENCE, CHRIST (DEEMED TO BE UNIVERSITY), BENGALURU	160.8	187.1	180.8	119.4	248.8	896.9	790.9	1,687.8
3	LOYOLA COLLEGE (AUTONOMOUS), CHENNAI	162.9	153.4	184.8	123.6	216.1	840.8	761.4	1,602.2
4	AMITY INSTITUTE OF INFORMATION TECHNOLOGY, NOIDA	121.4	193.2	171	137.6	212.2	835.4	762.8	1,598.2
5	KRISTU JAYANTI COLLEGE, BENGALURU	148.6	180.7	183.7	123.4	219.6	856	683	1,539
6	WOMEN'S CHRISTIAN COLLEGE, CHENNAI	164.6	146.7	143.5	91	250	795.8	740	1,535.8
7	ST JOSEPH'S COLLEGE, BENGALURU	150.2	157.3	164.8	127	194.3	793.6	738	1,531.6
8	STELLA MARIS COLLEGE, CHENNAI	163.6	156.8	154.2	134	169.5	778.1	737.5	1,515.6
9	PRESIDENCY COLLEGE, BENGALURU	145.9	199.2	147.4	89.3	202.4	784.2	638.4	1,422.6
10	DAV COLLEGE, CHANDIGARH	155.1	122	145.6	66	197.3	686	624.2	1,310.2
11	DEPARTMENT OF COMPUTER SCIENCE, ST XAVIER'S COLLEGE, AHMEDABAD	142.3	60.4	142.2	77.1	176.7	598.7	678.3	1,277
12	THE OXFORD COLLEGE OF SCIENCE, BENGALURU	109.5	139.5	150	86.1	195.4	680.5	578.4	1,258.9
13	GOSWAMI GANESH DUTTA S.D. COLLEGE, CHANDIGARH	149	175.1	178	124.8	209.1	836	338.8	1,174.8
14	MAHARAJA SURAJMAL INSTITUTE, NEW DELHI	122.4	175.3	138.1	128.3	181.1	745.2	424.7	1,169.9
15	ITS UG INSTITUTE, GHAZIABAD	129.1	147.7	154.4	95.6	160.4	687.2	480.3	1,167.5
16	SRI RAMAKRISHNA COLLEGE OF ARTS & SCIENCE, COIMBATORE	128.6	154.5	170.9	107.4	167.9	729.3	334.4	1,063.7
17	FACULTY OF COMPUTER APPLICATIONS & INFORMATION TECHNOLOGY, GLS UNIVERSITY, AHMEDABAD	141	125.9	90.8	80.2	125.7	563.6	489.1	1,052.7
18	MIT ARTS, COMMERCE & SCIENCE COLLEGE, PUNE	92.8	125.2	109.7	84.1	175	586.8	463.4	1,050.2
19	SRI DHARMASTHALA MANJUNATHESHWARA COLLEGE (AUTONOMOUS), UJIRE, KARNATAKA	143.4	82.3	188.5	66.1	244.3	724.6	297.5	1,022.1
20	ST ALOYSIUS COLLEGE (AUTONOMOUS), MANGALURU	151.8	152.6	167.7	69.2	200.6	741.9	256.8	998.7
21	NESS WADIA COLLEGE OF COMMERCE, PUNE	110.1	109.9	140.8	72.8	149.9	583.5	382.2	965.7
22	SCHOOL OF COMPUTER SCIENCE & IT, JAIN UNIVERSITY, BENGALURU	124	132.6	115.9	70.5	204.1	647.1	308.5	955.6
23	ETHIRAJ COLLEGE FOR WOMEN (AUTONOMOUS), CHENNAI	147	126.2	167.7	147.3	181.2	769.4	172.9	942.3
24	ST JOSEPH'S COLLEGE, TIRUCHIRAPALLI	154.1	114.8	175	40.9	206.2	691	232.2	923.2
25	DEV SAMAJ COLLEGE FOR WOMEN, FERDOSPUR	131.3	156.7	107.4	94	133.2	622.6	292.4	915



**Maharashtra Academy of Engineering and
Educational Research's**

**MIT Arts, Commerce and Science College, Alandi
(D) – 412 105.**

**INDIA TODAY-MDRA & Knowledge Review
Magazine**

2019

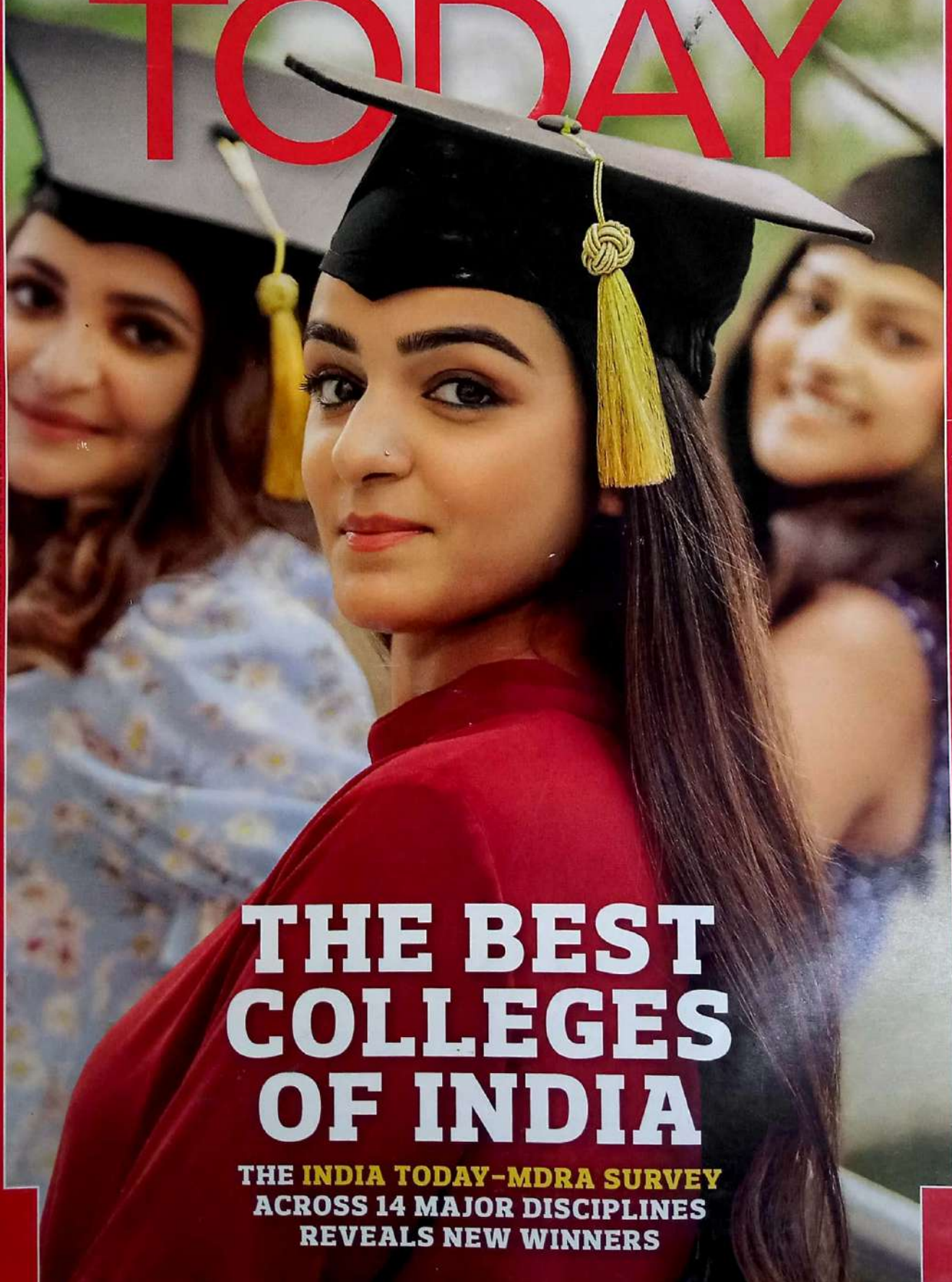
SPECIAL ISSUE

www.indiatoday.in

MAY 27, 2019 ₹60



INDIA TODAY



THE BEST COLLEGES OF INDIA

THE INDIA TODAY-MDRA SURVEY
ACROSS 14 MAJOR DISCIPLINES
REVEALS NEW WINNERS

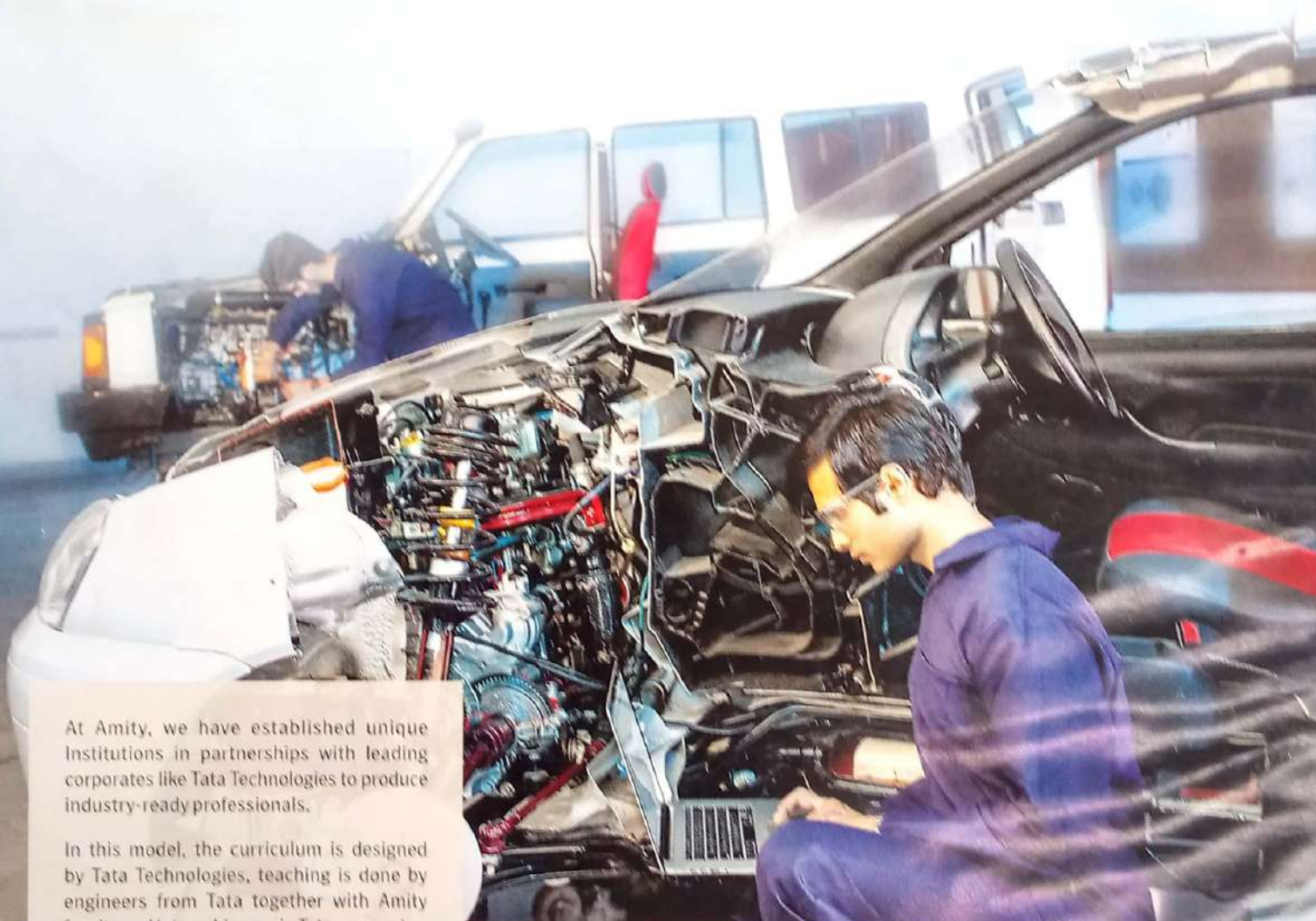
MANAV RACHNA EDUCATIONAL INSTITUTIONS

REGD. NO. 2006/775 REGISTERED NO. DL/IND/11/6068/2018-20. IIC-88/2018-20. EARI/DAB/D/05/2017-19. LICENSED TO POST WITHOUT PREPAYMENT

GLBAJAJ The Most Preferred Engineering Institute Award, 2019



AT AMITY, STAY AHEAD WITH **EDUCATION 4.0** THROUGH INDUSTRY-LED INSTITUTIONS



At Amity, we have established unique Institutions in partnerships with leading corporates like Tata Technologies to produce industry-ready professionals.

In this model, the curriculum is designed by Tata Technologies, teaching is done by engineers from Tata together with Amity faculty and internships are in Tata companies. Even the multi-crore labs (like one shown in the picture) are replicas of exactly what Tata Technology Engineers use.

This is a testimony to Amity's vision to transform education through industry-led academic institutions.

RANKED AMONGST THE TOP 3% UNIVERSITIES GLOBALLY



QS 2018 Ranking



THE 2018 Ranking

ASIA'S ONLY UNIVERSITY WITH HIGHEST US AND UK ACCREDITATION



WASC
SOUTHWESTERN ASSOCIATION TO ADVANCE COLLEGIATE SCHOOLS OF INTERNATIONAL BUSINESS



QAA
QUALITY ASSURANCE AGENCY FOR HIGHER EDUCATION

2019 session admissions open for 300 programmes in 60 disciplines. To apply, visit www.amity.edu

AMITY EDUCATION GROUP HAS CAMPUSES IN

- INDIA: • Noida (New Delhi NCR) • Greater Noida • Gurugram • Jaipur • Lucknow • Mumbai • Gwalior • Kolkata • Raipur • Ranchi • Patna • Ahmedabad • Bengaluru • Bhubaneswar • Chandigarh • Chennai • Hyderabad • Indore • Kochi • Pune
- OVERSEAS: • London • Dubai • New York • San Francisco • Seattle • Singapore • Mauritius • China • Abu Dhabi • South Africa • Amsterdam • Romania • Nairobi

TOP
3CITY-WISE
COLLEGES >>>**DELHI**

1. MIRANDA HOUSE
2. HINDU COLLEGE
3. ST STEPHEN'S COLLEGE

MUMBAI

1. SVKM'S MITHIBAI COLLEGE OF ARTS, CHAUHAN INSTITUTE OF SCIENCE & AMRUTBEN JIVANLAL COLLEGE OF COMMERCE AND ECONOMICS (AUTONOMOUS)
2. KISHINCHAND CHELLARAM COLLEGE
3. SOPHIA COLLEGE FOR WOMEN

CHENNAI

1. MADRAS CHRISTIAN COLLEGE
2. LOYOLA COLLEGE (AUTONOMOUS)
3. STELLA MARIS COLLEGE (AUTONOMOUS)

BENGALURU

1. DEPARTMENT OF SCIENCES, CHRIST (DEEMED TO BE UNIVERSITY)
2. MOUNT CARMEL COLLEGE, AUTONOMOUS
3. ST JOSEPH'S COLLEGE (AUTONOMOUS)

HYDERABAD

1. ST FRANCIS COLLEGE FOR WOMEN
2. ST ANN'S COLLEGE FOR WOMEN
3. ST JOSEPH'S DEGREE & PG COLLEGE

COIMBATORE

1. SRI RAMAKRISHNA COLLEGE OF ARTS & SCIENCE
2. SRI RAMAKRISHNA COLLEGE OF ARTS & SCIENCE FOR WOMEN

3. SRI KRISHNA ARTS & SCIENCE COLLEGE (AUTONOMOUS)

CHANDIGARH

1. GOSWAMI GANESH DUTTA S.D. COLLEGE (GGSDS)
2. MEHR CHAND MAHAJAN DAV COLLEGE FOR WOMEN
3. DAV COLLEGE, CHANDIGARH

KOLKATA

1. RAMAKRISHNA MISSION VIVEKANANDA CENTENARY COLLEGE
2. VIVEKANANDA COLLEGE
3. BARRACKPORE RASTRAGURU SURENDRANATH COLLEGE

PUNE

1. SIR PARASHURAMBHAU COLLEGE
2. ABEDA INAMDAR SENIOR COLLEGE OF ARTS, SCIENCE & COMMERCE
3. MIT ARTS, COMMERCE & SCIENCE COLLEGE

JAIPUR

1. ST WILFRED'S PG COLLEGE
2. PODDAR INTERNATIONAL COLLEGE
3. SCHOOL OF LIFE & BASIC SCIENCES, JAIPUR NATIONAL UNIVERSITY

AHMEDABAD

1. ST XAVIER'S COLLEGE (AUTONOMOUS)
2. M.G. SCIENCE INSTITUTE
3. GOVERNMENT SCIENCE COLLEGE

TOP
10EMERGING COLLEGES
OF THIS CENTURY* >>>

	COLLEGE
1	KRISTU JAYANTI COLLEGE, <i>Bengaluru</i>
2	ST WILFRED'S PG COLLEGE, <i>Jaipur</i>
3	S.K. SOMAIYA COLLEGE OF ARTS, SCIENCE & COMMERCE, <i>Mumbai</i>
4	VIVEKANANDA COLLEGE, <i>Kolkata</i>
5	ST JOSEPH'S DEGREE & PG COLLEGE, <i>Hyderabad</i>
6	SRI KRISHNA ARTS & SCIENCE COLLEGE (AUTONOMOUS), <i>Coimbatore</i>
7	PODDAR INTERNATIONAL COLLEGE, <i>Jaipur</i>
8	DR N.G.P. ARTS & SCIENCE COLLEGE, <i>Coimbatore</i>
9	SCIENCE & LABORATORY EDUCATION LIBRARY SCIENCE, IPS ACADEMY, <i>Mumbai</i>
10	GOVERNMENT SCIENCE COLLEGE, <i>Ahmedabad</i>

Colleges whose first batch passed out in or before 2018 were considered for emerging colleges.

they develop their voice and their opinions," says Bansal. Jha adds that there is a healthy balance of academics and extracurricular activities, but adds that there is scope for improvement. "I think we could really increase the amount of sports that we have in our college. Right now, sports is not really a focus area," says. With new initiatives on the campus, Mirandians are encouraged to work on a number of projects apart from their syllabus. "The students and teachers form such a close-knit community here, and the amount of effort the faculty puts in to improve us is amazing," says Jha. ■



TOP 120 BEST COLLEGES >>> SCIENCE

OVER-ALL RANK 2019	OVERALL RANK 2018	INSTITUTE AND CITY	INTAKE QUALITY & GOVERNANCE	ACADEMIC EXCELLENCE	INFRASTRUC-TURE & LIVING EXPERIENCE	PERSONALITY & LEADERSHIP DEVELOPMENT	CAREER PROGRESSION & PLACEMENT	OBJECTIVE SCORE	PERCEPTUAL SCORE	OVERALL SCORE
			250	250	175	175	150	1000	1000	2000
81	72	GOVERNMENT DEGREE COLLEGE FOR WOMEN, HYDERABAD	138.4	119.6	85.9	97.8	104.7	546.4	274.9	821.3
82	97	DAV COLLEGE, HOSHIARPUR	124.8	115.8	102.9	73.0	67.3	483.8	336.5	820.3
83	82	SACRED HEART COLLEGE (AUTONOMOUS), TIRUPATTUR, TN	177.0	146.9	111.0	52.8	59.7	547.4	272.4	819.8
84	91	DR S.N.S. RAJALAKSHMI COLLEGE OF ARTS AND SCIENCE (AUTONOMOUS), COIMBATORE	130.1	111.9	119.2	74.9	98.0	534.1	280.6	814.7
85	NP	DM'S COLLEGE & RESEARCH CENTRE, MAPUSA, GOA	137.5	160.4	118.3	105.6	54.3	576.1	238.3	814.4
86	75	KONGU ARTS AND SCIENCE COLLEGE (AUTONOMOUS), ERODE	138.1	115.4	107.1	83.1	78.2	521.9	291.3	813.2
87	93	BBK DAV COLLEGE FOR WOMEN, AMRITSAR	123.2	144.4	86.5	75.1	64.0	494.1	318.3	812.4
88	81	S.M. PATEL COLLEGE OF HOME SCIENCE, ANAND	127.6	134.3	95.4	108.4	97.5	563.2	238.3	801.5
89	95	J.V.M'S DIWALIMAA DEGREE COLLEGE OF SCIENCE, DR R.T. DOSHI COLLEGE OF COMPUTER SCIENCE & IT, MUMBAI	153.0	124.4	84.0	77.3	55.1	493.8	306.8	800.6
90	94	MIT ARTS, COMMERCE & SCIENCE COLLEGE, PUNE	104.8	114.0	107.3	85.8	69.7	481.6	315.2	796.8
91	88	DR R.V. ARTS & SCIENCE COLLEGE, COIMBATORE	94.9	85.0	101.7	57.3	81.4	420.3	365.8	786.1
92	92	SRI KANYAKA PARAMESWARI ARTS & SCIENCE COLLEGE FOR WOMEN, CHENNAI	133.5	104.0	88.5	114.1	82.2	522.3	262.3	784.6
93	89	KOVAI KALAIMAGAI COLLEGE OF ARTS & SCIENCE, COIMBATORE	125.1	112.6	120.1	111.2	71.7	540.7	238.3	779.0
94	98	HINDUSTAN COLLEGE OF ARTS & SCIENCE, CHENNAI	94.7	127.8	104.2	67.1	39.5	433.3	344.1	777.4
95	84	MUTHAYAMMAL COLL. OF ARTS & SC., NAMAKKAL, TAMIL NADU	122.4	131.9	113.1	74.0	97.6	539.0	238.3	777.3
96	86	N.V. PATEL COLLEGE OF PURE AND APPLIED SCIENCES, ANAND	124.0	139.3	102.1	90.7	82.0	538.1	238.3	776.4
97	90	SDSM'S S.D. ARTS, V.S.APTE COMMERCE, M.H. MEHTA SCIENCE COLLEGE, PALGHAR, MAHARASHTRA	151.8	140.5	109.2	69.9	51.8	523.2	238.3	761.5
98	NP	SHRI SHANKARIAL SUNDARBAI SHASUN JAIN COLLEGE FOR WOMEN, CHENNAI	136.4	93.2	98.9	92.7	71.5	492.7	238.3	731.0
99	96	BARRACKPORE RASTRAGURU SURENDRANATH COLLEGE, KOLKATA	133.4	115.1	80.2	55.1	86.9	470.7	259.3	730.0
100	102	INDIAN INSTITUTE OF MGMT & COMMERCE, HYDERABAD	136.5	70.6	95.9	59.1	31.8	393.9	329.6	723.5
101	NP	KSR COLLEGE OF ARTS & SCIENCE FOR WOMEN, TIRUCHENGODE, TAMIL NADU	87.7	84.4	96.4	73.4	47.1	389.0	277.9	666.9
102	103	M.M.K. & SDM MAHILA MAHAVIDYALAYA, MYSURU	84.5	106.8	91.5	55.2	62.2	400.2	238.3	638.5
103	NP	NALLAMUTHU GOUNDER MAHALINGAM COLLEGE, POLIACHI	177.1	113.0	119.0	80.6	96.3	506.0	0.0	586.0
104	NP	S.D.N.B. VAISHNAV COLLEGE FOR WOMEN, CHENNAI	174.9	117.3	96.5	84.6	109.4	582.7	0.0	582.7
105	NP	DAV CENTENARY COLLEGE, FARIDABAD	143.5	58.5	57.8	33.1	35.3	328.2	238.3	566.5
106	NP	KANYA MAHAVIDYALAYA, JALANDHAR	148.1	144.6	98.1	85.2	54.6	530.6	0.0	530.6
107	NP	V.L.B. JANAKIAMMAL COLLEGE OF ARTS & SC., COIMBATORE	137.3	78.8	120.8	98.3	92.6	527.8	0.0	527.8
108	NP	AVANTHI DEGREE & PG COLLEGE, HYDERABAD	117.1	145.1	74.5	84.1	102.6	523.4	0.0	523.4
109	NP	ANNA ADARSH COLLEGE FOR WOMEN, CHENNAI	139.1	115.8	87.0	101.8	77.9	521.6	0.0	521.6
110	NP	JSS ACADEMY OF HIGHER EDUCATION & RESEARCH, MYSURU	99.8	146.3	104.6	92.2	59.7	502.6	0.0	502.6
111	NP	SURANA COLLEGE, BENGALURU	139.2	129.8	113.5	70.0	29.5	482.0	0.0	482.0
112	NP	JAGIROAD COLLEGE, JAGIROAD, ASSAM	160.0	94.3	110.6	49.7	56.0	470.6	0.0	470.6
113	NP	BISHOP MOORE COLLEGE, MAVELIKARA, KERALA	113.8	127.4	87.6	68.2	65.9	462.9	0.0	462.9
114	NP	SREE NARAYANA GURU COLLEGE, COIMBATORE	82.0	114.9	100.9	75.1	85.1	458.0	0.0	458.0
115	NP	ANANDARAM DHEKIAL PHOOKAN COLLEGE, NAGAON	145.7	114.0	80.7	10.7	76.8	427.9	0.0	427.9
116	NP	PIONEER COLLEGE OF ARTS & SCIENCE, COIMBATORE	88.4	72.4	95.9	70.1	94.1	420.9	0.0	420.9
117	NP	ST AGNES COLLEGE (AUTONOMOUS), MANGALURU	127.8	72.9	87.4	65.7	66.5	420.3	0.0	420.3
118	NP	SREE SARASWATHI THYAGARAJA COLLEGE, COIMBATORE	101.9	134.0	82.3	69.1	31.0	418.3	0.0	418.3
119	NP	BISHOP APPASAMY COLLEGE OF ARTS & SCIENCE, COIMBATORE	104.0	97.1	97.0	69.8	41.6	409.5	0.0	409.5
120	NP	CHANDIGARH COLLEGE OF TECHNOLOGY, MOHALI	90.1	97.5	99.6	66.8	43.5	397.5	0.0	397.5

Rankings are based on objective and perceptual survey data. Only colleges that offer a full-time undergraduate programme and which submitted objective data of minimum three graduated batches were ranked. All scores have been rounded off to one decimal place, this may result in rounding-off errors while adding the parameter-wise score. The colleges not ranked during perceptual survey have got nil marks in perceptual score



TOP 120 BEST COLLEGES >>> BBA ●●●

TOP 120 BEST COLLEGES >>> BBA ●●●

OVER-ALL RANK 2019	OVERALL RANK 2018	INSTITUTE AND CITY	INTAKE QUALITY & GOVERNANCE	ACADEMIC EXCELLENCE	INFRASTRUCTURE & LIVING EXPERIENCE	PERSONALITY & LEADERSHIP DEVELOPMENT	CAREER PROGRESSION & PLACEMENT	OBJECTIVE SCORE	PERCEPTUAL SCORE	OVERALL SCORE
			240	270	180	210	300	1200	800	2,000
↓	41	27 CHANDIGARH BUSINESS SCHOOL OF ADMN, MOHALI	154.2	184.4	130.5	130.7	213.3	821.1	416.2	1,237.3
-	42	NP INTERNATIONAL SCHOOL OF BUSINESS & MEDIA (ISBM), PUNE	117.8	171.3	119.2	111.9	203.0	723.2	512.6	1,235.8
↓	43	35 THE OXFORD COLLEGE OF BUSINESS MGMT, BENGALURU	168.0	172.1	120.7	151.3	220.9	833.0	400.5	1,233.5
↓	44	34 SURANA COLLEGE, BENGALURU	167.4	155.6	113.8	114.8	194.2	745.8	485.3	1,231.1
↓	45	30 DAV CENTENARY COLLEGE, FARIDARAD	160.6	171.5	102.5	117.4	191.3	743.3	477.2	1,220.5
↓	46	42 SRI RAMAKRISHNA COLLEGE OF ARTS & SCIENCE FOR WOMEN, COIMBATORE	157.1	161.4	127.1	147.9	220.9	814.4	402.8	1,217.2
↓	47	31 SACRED HEART COLLEGE (AUTONOMOUS), TIRUPATTUR TN	159.2	143.5	134.9	132.7	165.5	735.8	474.8	1,210.6
↔	48	48 SRI RAMAKRISHNA COLL. OF ARTS & SCIENCE, COIMBATORE	155.8	170.9	140.2	133.2	206.4	806.5	401.7	1,208.2
-	49	NP THE BHOPAL SCHOOL OF SOCIAL SC. (AUTONOMOUS), BHOPAL	170.7	172.0	112.9	118.0	191.7	765.3	437.4	1,202.7
↓	50	41 ST JOSEPH'S DEGREE & PG COLLEGE, HYDERABAD	152.1	160.1	102.2	109.2	175.9	699.5	502.4	1,201.9
↓	51	39 SCHOOL OF BUSINESS & MANAGEMENT, JAIPUR NATIONAL UNIVERSITY, JAIPUR	152.5	174.5	134.5	146.6	213.5	821.6	379.7	1,201.3
↓	52	36 DR S.N.S. RAJALAKSHMI COLLEGE OF ARTS & SCIENCE, COIMBATORE	183.3	165.8	130.8	130.4	210.9	829.2	370.5	1,199.7
↓	53	33 GURU NANAK COLLEGE (AUTONOMOUS), CHENNAI	152.1	153.1	126.1	111.9	204.6	747.8	451.5	1,199.3
↓	54	38 LINGAYA'S LALITA DEVI INSTITUTE OF MANAGEMENT & SCIENCES, NEW DELHI	150.0	170.4	114.3	140.1	233.9	808.7	390.2	1,198.9
↓	55	44 ST JOSEPH'S COLLEGE (AUTONOMOUS), TIRUCHIRAPPALLI	171.4	160.3	139.5	137.8	206.9	815.9	381.6	1,197.5
↓	56	51 IPS ACADEMY, INDORE	160.7	215.4	118.7	118.8	186.5	800.1	388.8	1,188.9
↓	57	50 WOMEN'S CHRISTIAN COLLEGE, CHENNAI	168.1	162.5	130.7	151.9	182.7	795.9	387.5	1,183.4
↓	58	46 TEERTHANKER MAHAVEER INSTITUTE OF MANAGEMENT & TECHNOLOGY, MDRADABAD	152.9	188.6	128.8	144.0	203.4	817.7	365.6	1,183.3
↓	59	40 GOBI ARTS & SCIENCE COLLEGE (AUTONOMOUS), FRODE	181.6	170.9	135.3	139.0	140.8	767.6	414.3	1,181.9
↓	60	43 MEHR CHAND MAHAJAN DAV COLL. FOR WOMEN, CHANDIGARH	152.6	156.5	106.1	116.6	214.5	746.3	432.0	1,178.3
-	61	NP FACULTY OF BUSINESS MANAGEMENT, PCTE, TIRUHIANA	134.6	169.1	125.6	172.9	185.7	787.9	389.5	1,177.4
-	62	NP SCHOOL OF HOSPITALITY AND TOURISM MANAGEMENT, UNIVERSITY OF JAMMU, JAMMU	159.6	149.1	123.9	118.0	103.1	653.7	518.5	1,172.2
-	63	NP CHITKARA BUSINESS SCHOOL, RAIPURA PUNJAB	125.9	204.9	144.6	163.9	160.8	800.1	368.7	1,168.8
↓	64	49 THE ICFAI UNIVERSITY SIKKIM, GANGTOK	144.9	144.8	111.8	164.2	220.2	785.9	352.3	1,138.2
↓	65	58 T. JOHN COLLEGE, BENGALURU	146.1	151.8	114.9	132.1	200.7	745.6	378.8	1,124.4
↓	66	55 INSTITUTE OF MGMT, J.K. LAKSHMIPAT UNIVERSITY, JAIPUR	145.0	192.5	148.1	132.9	154.4	772.9	333.8	1,106.7
-	67	NP FACULTY OF MGMT STUDIES, ICFAI UNIVERSITY, TRIPURA	156.4	193.6	139.7	155.0	168.7	813.4	292.2	1,105.6
↓	68	56 ST WILFRED'S PG COLLEGE, JAIPUR	144.5	157.3	132.6	127.5	197.9	759.8	344.9	1,104.7
↓	69	52 ST MIRA'S COLLEGE FOR GIRLS, PUNE	152.4	128.7	113.7	115.0	176.7	686.5	413.0	1,099.5
↓	70	NP SCHOOL OF COMMERCE & MANAGEMENT, GARDEN CITY UNIVERSITY, BENGALURU	124.8	183.0	138.5	167.7	234.2	848.2	237.4	1,085.6
↓	71	57 KONGU ARTS AND SCIENCE COLLEGE (AUTONOMOUS), FRODE	156.6	160.3	143.1	103.4	198.9	762.3	314.7	1,077.0
↓	72	70 MIT- ARTS, COMMERCE & SCIENCE COLLEGE, PUNE	144.1	148.6	105.0	116.3	194.0	708.0	352.5	1,060.5
-	73	NP TECNIA INSTITUTE OF ADVANCED STUDIES, NEW DELHI	136.4	149.9	77.7	81.0	198.0	643.0	401.2	1,044.2
-	74	NP BBK DAV COLLEGE FOR WOMEN, AMRITSAR	168.1	106.3	86.2	97.5	133.3	591.4	435.0	1,026.4
↓	75	59 KOVAI KALAIMAGAL COLL. OF ARTS & SCIENCE, COIMBATORE	158.5	146.3	142.5	126.0	171.7	745.0	281.1	1,026.1
↓	76	64 ST ANN'S COLLEGE FOR WOMEN (AUTONOMOUS), HYDERABAD	161.7	141.5	113.3	145.8	178.5	740.8	270.3	1,011.1
-	77	NP DAV COLLEGE ABOHAR, ABOHAR PUNJAB	171.9	178.1	143.2	130.7	8.8	630.7	379.9	1,010.6
↓	78	60 NEHRU ARTS & SC. COLL. (AUTONOMOUS), COIMBATORE	156.9	171.0	139.7	105.1	180.8	753.5	254.5	1,008.0
↓	79	63 JUSTICE BASHEER AHMED SAYEED COLLEGE FOR WOMEN, CHENNAI	168.9	133.9	114.9	121.0	166.1	704.8	303.0	1,007.8
↓	80	61 SRI KANYAKA PARAMESHWARI ARTS & SCIENCE COLLEGE FOR WOMEN, CHENNAI	150.9	139.8	121.1	147.6	185.1	744.5	255.3	999.8



TOP 80 BEST COLLEGES >>> BCA ●●●

OVER-ALL RANK 2019	OVERALL RANK 2018	INSTITUTE AND CITY	INTAKE QUALITY & GOVERNANCE	ACADEMIC EXCELLENCE	INFRASTRUCTURE & LIVING EXPERIENCE	PERSONALITY & LEADERSHIP DEVELOPMENT	CAREER PROGRESSION & PLACEMENT	OBJECTIVE SCORE	PERCEPTUAL SCORE	OVERALL SCORE
			210	270	240	180	300	1,200	800	2,000
↔	1	1 SYMBIOSIS INST. OF COMP. STUDIES & RESEARCH, PUNE	161.6	239.0	181.2	139.5	239.4	960.7	772.0	1,732.7
↔	2	2 DEPT OF COMP. SC., CHRIST UNIVERSITY, BENGALURU	154.0	216.3	205.1	146.3	240.5	962.2	758.3	1,720.5
↔	3	3 LOVELY COLLEGE (AUTONOMOUS), CHENNAI	186.7	176.5	204.1	148.0	228.8	944.1	775.9	1,720.0
↑	4	8 STELLA MARIS COLLEGE (AUTONOMOUS), CHENNAI	180.6	190.0	163.5	139.1	228.8	900.0	757.8	1,657.8
↓	5	4 AMITY INSTITUTE OF INFORMATION TECHNOLOGY, NOIDA	132.4	207.2	183.3	147.5	222.0	892.4	758.5	1,650.9
↓	6	5 KRISTU JYOTI COLLEGE, BENGALURU	153.0	216.0	195.8	143.7	228.4	936.9	706.0	1,642.9
↓	7	6 WOMEN'S CHRISTIAN COLLEGE, CHENNAI	189.9	175.1	164.6	103.9	255.4	888.9	739.5	1,628.4
↓	8	7 ST JOSEPH'S COLLEGE (AUTONOMOUS), BENGALURU	151.5	184.0	172.5	150.1	203.2	861.3	727.8	1,589.1
-	9	NP MADRAS CHRISTIAN COLLEGE (AUTONOMOUS), CHENNAI	156.7	161.9	195.1	93.8	179.5	787.0	746.0	1,533.0
↑	10	13 BOSMARI SANKESH DUTTA S.O. COLLEGE, CHANDIGARH	164.0	204.8	204.8	144.7	238.9	957.2	521.6	1,478.8
↓	11	10 DAY COLLEGE, CHANDIGARH	157.4	160.4	163.4	101.5	221.0	803.7	633.1	1,436.8
-	12	NP JAGAN INSTITUTE OF MANAGEMENT STUDIES, NEW DELHI	138.5	220.6	110.7	145.7	251.3	866.8	544.9	1,411.7
↓	13	11 DEPT OF COMP. SCIENCE, ST XAVIER'S COLL., AHMEDABAD	145.8	144.0	159.2	100.8	192.4	742.2	652.3	1,394.5
-	14	NP SCHOOL OF INFORMATION TECHNOLOGY, IMS, NOIDA	134.0	180.8	108.3	126.4	203.6	753.1	639.8	1,392.9
↓	15	9 PRESIDENCY COLLEGE, BENGALURU	146.5	188.3	165.3	110.5	211.8	822.4	564.1	1,386.5
↓	16	14 MAHARAJA SURAJMAL INSTITUTE, NEW DELHI	135.9	190.1	163.2	149.5	203.7	842.4	519.7	1,362.1
-	17	NP PRESTIGE INSTITUTE OF MGMT & RESEARCH, INDORE	153.6	214.9	195.0	126.8	203.3	893.6	466.0	1,359.6
-	18	NP W.S. RAMAKRISHNA COLLEGE OF ARTS, SCIENCE & COMMERCE, BENGALURU	132.9	137.0	177.4	75.8	213.8	736.9	617.3	1,354.2
↓	19	15 ITS US INSTITUTE, MOHAN BAGAR, CHAZIABAD	143.6	180.5	167.9	118.2	196.2	806.4	545.4	1,351.8
-	20	NP KANYA MAHARAJA COLLEGE, JALANDHAR	176.9	155.9	145.2	88.1	241.9	808.0	537.3	1,345.3
↓	21	20 ST ALPHONSUS COLLEGE (AUTONOMOUS), MANGALURU	161.6	178.6	182.0	110.1	212.4	844.7	492.4	1,337.1
↓	22	19 SRI DHARMASTHALA NARAYANATHESHWARA COLLEGE, UJIRE	147.8	146.2	210.3	90.6	242.3	837.2	488.7	1,325.9
-	23	NP PRESTIGE INSTITUTE OF MANAGEMENT, GWALIOR	145.5	207.0	196.8	139.7	204.8	893.8	431.7	1,325.5
↓	24	17 FACULTY OF COMPUTER APPLICATIONS & INFORMATION TECHNOLOGY, G.I.S. UNIVERSITY, AHMEDABAD	144.1	156.9	138.0	111.5	177.3	727.8	597.0	1,324.8
↓	25	12 THE OXFORD COLLEGE OF SCIENCE, BENGALURU	131.3	170.4	165.4	111.5	205.2	783.8	537.8	1,321.6
↓	26	22 SCHOOL OF COMPUTER SCIENCE & IT, JAIN UNIV., BENGALURU	140.4	170.3	147.6	107.2	221.8	787.3	534.1	1,321.4
↓	27	16 SRI RAMAKRISHNA COLLEGE OF ARTS & SCIENCE, COIMBATORE	142.0	192.4	178.3	126.1	191.9	830.7	488.1	1,318.8
↓	28	18 WIT ARTS, COMMERCE & SCIENCE COLLEGE, PUNE	114.8	164.9	152.0	106.9	208.3	746.9	568.7	1,315.6
↓	29	25 DEV SANKU COLLEGE FOR WOMEN, FERIZEPUR	169.0	191.2	150.2	119.9	203.3	833.6	476.7	1,310.3
↓	30	23 ETHIRAI COLLEGE FOR WOMEN (AUTONOMOUS), CHENNAI	145.6	165.0	174.7	153.8	221.0	860.1	444.3	1,304.4
↓	31	26 AMITY INSTITUTE OF INFORMATION TECHNOLOGY, LUCKNOW	129.3	189.5	212.6	143.0	182.2	856.6	444.5	1,301.1
↓	32	27 WEHR CHAND NIKHILAN DAY COLL. FOR WOMEN, CHANDIGARH	148.3	188.1	160.6	124.2	206.6	827.8	470.0	1,297.8
↓	33	26 ST MARK'S COLLEGE FOR GIRLS, PUNE, PUNE	131.5	141.1	138.0	103.9	189.8	704.1	582.3	1,288.4
↓	34	24 ST JOSEPH'S COLLEGE (AUTONOMOUS), THIRUCHIRAPPALLI	166.8	162.1	194.4	80.5	210.2	814.0	432.2	1,246.2
↑	35	36 DAY COLLEGE HOSHARPUR, HOSHARPUR	146.1	194.6	194.6	124.3	205.5	865.1	368.4	1,233.5
↓	36	29 SRI RAMAKRISHNA COLLEGE OF ARTS & SCIENCE FOR WOMEN, CHANDIGARH	131.2	187.9	177.7	143.8	180.0	820.6	410.9	1,231.5
↓	37	30 MAHARAJA LAKSHMI ANJANNI COLL. FOR WOMEN, BENGALURU	146.4	148.9	147.6	102.3	232.7	777.9	431.2	1,209.1
-	38	NP PARUL INSTITUTE OF COMPUTER APPLICATION, PARUL UNIVERSITY, BANGALORE	106.4	151.2	158.1	111.0	197.9	724.6	474.1	1,198.7
↓	39	38 PRESTIGE INSTITUTE OF MANAGEMENT, DEWAS	126.8	187.5	172.2	141.3	203.3	831.1	358.0	1,190.1
↓	40	37 SCHOOL OF COMPUTER & SYSTEMS SCIENCES, JAIPUR NATIONAL UNIVERSITY, JAIPUR	131.3	185.9	190.5	132.8	202.5	843.0	345.9	1,188.9



TOP 145 BEST COLLEGES >>> COMMERCE ●●●

OVER-ALL RANK 2019	OVERALL RANK 2018	INSTITUTE AND CITY	INTAKE QUALITY & GOVERNANCE	ACADEMIC EXCELLENCE	INFRASTRUCTURE & LIVING EXPERIENCE	PERSONALITY & LEADERSHIP DEVELOPMENT	CAREER PROGRESSION & PLACEMENT	OBJECTIVE SCORE	PERCEPTUAL SCORE	OVERALL SCORE
			225	250	150	175	200	1,000	1,000	2,000
↑ 113	115	HINDUSTAN COLLEGE OF ARTS & SCIENCE, CHENNAI	115.8	120.7	87.2	66.3	77.8	467.8	161.3	629.1
↓ 114	109	SIVANANDA SARMA MEMORIAL RV COLLEGE, BENGALURU	145.3	102.1	88.8	78.1	97.4	509.7	118.6	628.3
↓ 115	110	PATRICIAN COLLEGE OF ARTS & SCIENCE, CHENNAI	140.4	112.3	60.8	81.7	102.5	497.7	123.9	621.6
- 116	NP	PODDAR INTERNATIONAL COLLEGE, JAIPUR	136.2	142.5	106.8	109.9	125.0	620.4	-	620.4
↓ 117	101	SONOPANT DANDEKAR SHIKSHAN MANDALI'S SD ARTS, V.S. APTE COMMERCE, M.H. MEHTA SCIENCE COLLEGE, PALGHAR, MAHARASHTRA	169.0	140.9	79.8	84.0	84.4	558.1	58.9	617.0
↓ 118	112	CAUVERY COLLEGE, VIRAIPEET, KARNATAKA	119.3	83.5	93.8	75.6	108.0	478.2	135.0	613.2
- 119	NP	MUTHAYAMMAL COLLEGE OF ARTS & SCIENCE, NAMAKKAL, TN	135.5	147.7	103.9	91.7	88.4	547.2	58.9	606.1
- 120	NP	BHARATA MATA COLLEGE, KOCHI	166.5	145.2	76.2	77.9	135.3	601.1	-	601.1
- 121	NP	ST ANNE'S DEGREE COLLEGE FOR WOMEN, BENGALURU	151.4	134.7	74.3	98.1	141.7	600.2	-	600.2
- 122	NP	V.L.B. JANAKIAMMAL COLL. OF ARTS & SCIENCE, COIMBATORE	123.0	146.9	109.3	111.5	104.2	594.9	-	594.9
- 123	NP	NALLAMUTHU GOUNDER MAHALINGAM COLLEGE, POLLACHI	160.2	136.8	98.7	86.8	110.7	593.2	-	593.2
↓ 124	102	KOVAI KALAIMAGAL COLLEGE OF ARTS & SCIENCE (KKCAS), COIMBATORE	108.7	117.4	108.1	102.1	95.2	532.5	58.9	591.4
↓ 125	116	JNAN VIKAS MANDAL'S MOHANLAL RAICHAND MEHTA DEGREE COLLEGE OF COMMERCE, DR R.T. DOSHI DEGREE COLLEGE OF COMPUTER SCIENCE & IT, NAVI MUMBAI	147.3	116.9	61.7	58.7	92.7	477.3	112.9	590.2
↓ 126	104	SRI KANYAKA PARAMESWARI ARTS & SCIENCE COLLEGE FOR WOMEN, CHENNAI	131.7	121.1	74.7	100.8	100.7	529.0	58.9	587.9
- 127	NP	AMITY BUSINESS SCHOOL, GWALIOR	70.3	147.7	125.3	116.0	126.0	585.3	-	585.3
- 128	NP	AVANTHI DEGREE & PG COLLEGE, HYDERABAD	104.2	153.0	88.3	104.7	141.4	569.6	-	569.6
↓ 129	119	GOVT COLLEGE, KULLU	129.2	69.2	76.8	70.5	61.7	407.4	161.7	569.1
- 130	NP	MIT ARTS, COMMERCE & SCIENCE COLLEGE, PUNE	96.0	147.1	107.3	117.1	95.0	562.5	0.0	562.5
↓ 131	114	DAV COLLEGE FOR WOMEN, FERROZEPUR CANTT, FERROZEPUR	104.3	84.0	62.4	81.1	104.4	436.2	124.6	560.8
- 132	NP	GOVINDRAM SEKSARIA COLLEGE OF COMMERCE, WARDHA	150.0	122.3	85.3	100.7	98.3	556.6	-	556.6
- 133	NP	SREE SARASWATHI THYAGARAJA COLLEGE, POLLACHI	119.6	142.0	102.3	84.5	99.5	547.9	-	547.9
- 134	NP	KSR COLLEGE OF ARTS & SCIENCE FOR WOMEN, TIRUCHENGODE, TAMIL NADU	77.3	132.5	110.4	61.1	106.5	487.8	58.9	546.7
- 135	NP	FR AGNEL COLLEGE OF ARTS & COMMERCE, PILAR, GOA	132.4	148.0	75.0	104.7	75.6	535.7	-	535.7
- 136	NP	DAV CENTENARY COLLEGE, FARIDABAD	148.2	101.4	55.2	78.0	106.9	489.7	-	489.7
- 137	NP	T. JOHN INSTITUTE OF MANAGEMENT & SCIENCE, BENGALURU	87.5	134.3	98.8	72.7	82.3	475.6	-	475.6
- 138	NP	BISHOP APPASAMY COLL. OF ARTS & SCIENCE, COIMBATORE	113.5	105.5	100.6	87.1	60.0	466.7	-	466.7
- 139	NP	PIONEER COLLEGE OF ARTS & SCIENCE, COIMBATORE	99.1	74.8	88.0	83.9	105.7	451.5	-	451.5
- 140	NP	SREE NARAYANA GURU COLLEGE, COIMBATORE	91.2	98.2	93.3	62.9	96.8	442.4	-	442.4
- 141	NP	JAGIROAD COLLEGE, JAGIROAD, ASSAM	144.2	81.9	95.4	33.7	79.5	434.7	-	434.7
- 142	NP	ANNAI THERASA ARTS & SCIENCE COLLEGE, THIRUKAZHUKUNDRAM, TAMIL NADU	84.6	108.7	77.8	88.0	65.7	424.8	-	424.8
- 143	NP	VIDYA PRABODHINI COLLEGE OF COMMERCE, EDUCATION, COMPUTER & MANAGEMENT, PARVARI, GOA	111.7	116.7	84.0	54.4	29.2	396.0	-	396.0
- 144	NP	DPM'S SHREE MALLIKARJUN COLLEGE OF ARTS & COMMERCE, CANACONA, GOA	131.4	100.2	81.8	41.3	26.7	381.2	-	381.2
- 145	NP	SHREE HALARI VISA OSWAL COLLEGE OF COMMERCE, BHIWANDI	111.8	131.9	75.4	60.8	0.0	379.9	-	379.9

NP: Not participated

Rankings are based on objective and perceptual survey data. Only colleges that offer a full-time undergraduate programme and submitted objective data of minimum three graduated batches were ranked. All scores have been rounded off to one decimal place, this may result in rounding-off error while adding the parameter-wise score. Colleges not ranked during perceptual survey have got nil marks in perceptual score.

The times of India

TIMES BBA EDUCATION RANKING SURVEY 2019

The objective of this research is to arrive at a list of top BBA colleges offering full time BBA courses – in India. The research had 3 major modules i.e. Desk Research, Factual survey & Perceptual Rating survey.

TOP 70 BBA INSTITUTE RANKINGS 2019

Rank	Name	Rank	Name
1	Amity School of Business, Noida	36	Sri Ramakrishna College of Arts And Science for Women, Coimbatore
2	SVKM's NMIMS Anil Surendra Modi School of Commerce, Mumbai	37	National Academy of Event Management & Development (NAEMD), Mumbai
3	KIIT School of Management, Bhubaneswar	38	Sri Shikshayatan College, Kolkata
4	Prestige Institute of Management, Gwalior	39	Prestige Institute of Management, Dewas, Madhya Pradesh
5	Prestige Institute of Management, Indore	40	Indian Academy Degree College-Autonomous, Bengaluru
6	St. Joseph College of Commerce, Bengaluru	41	Kristu Jayanti College, Bengaluru
7	Gobi Arts & Science College, Erode, Tamil Nadu	42	Tula's Institute of Engineering & Management College, Dehradun
8	Goswami Ganesh Dutta Sanatan Dharma (Ggdsd) College, Chandigarh	43	St. Joseph's Degree and PG College (Autonomous), Hyderabad
9	MIT WPU, Pune	44	International School of Management, Patna
10	Jagan Institute of Management Studies, Sec 5, Rohini, Delhi	45	Kamrah Institute of Information Technology, Gurgaon
11	The Bhawanipur Education Society College, Kolkata	46	Shri Shankaralal Sundarbai Shasun Jain College for Women, Chennai
12	Institute of Management Studies, Ghaziabad	47	Kongu Arts And Science College (Autonomous), Erode
13	Indira College of Commerce and Science, Pune	48	The Bhopal School of Social Sciences, Bhopal
14	Manav Rachna International Institute of Research And Studies (MRIIRS), Faridabad	49	Vishwakarma University, Pune
15	Apeejay Stya University, School of Management Studies, Gurgaon	50	Institute of Management Studies, Noida
15	ICFAI Business school, Hyderabad	51	Tecnia Institute of Advanced Studies, Delhi
16	Jagannath International Management School, Kalkaji, Delhi	52	Lingaya's Lalita Devi Institute of Management And Sciences, New Delhi
17	GLA University, Mathura	53	Rosary College of Commerce & Arts, Goa
18	Symbiosis Center of Management Studies, Noida	54	Parul Institute of Business Administration, Vadodara
19	MIT Arts, Commerce & Science College, Pune	55	Indian Institute of Management And Commerce, Hyderabad
20	Center for Management Studies (CMS) - Jain University, Bengaluru	56	Universal Business School, Mumbai
21	IMS Unison University, Dehradun	57	Reva University, Bengaluru
21	Chanderprabhu Jain college of higher studies and school of law, Delhi	58	Institute of Finance And International Management (Ifim), Bengaluru
22	Narula Institute of Technology, Kolkata	59	Maharaja Surajmal Institute of Technology, New Delhi
23	Dayananda Sagar Business Academy, (Dayananda Sagar B-School), Bengaluru	60	School of Management & Commerce, Sanskriti University, Mathura
24	Dayananda Sagar College of Arts, Science And Commerce, Bengaluru	61	Bhartiya Vidya Bhawan Institute of Management Science, Kolkata
25	Presidency College, Bengaluru	62	ISB&M College of Commerce, Pune
26	Jagannath International Management School, Vasant Kunj, Delhi	63	School of Management Studies, GIET University, Bhubaneswar
27	Balaji College of Arts, Commerce And Science, Pune	64	Faculty of Commerce & Business Management, Amrapali Group of Institutes, Uttarakhand
28	Asian School of Business, Noida	65	Government College of Commerce And Business Administration, Chandigarh
29	Chandigarh Business School of Administration, Punjab	66	Surana College, Bengaluru
30	Dnyanprassarak Mandal's College & Research Centre, Goa	67	School of management, Adamas University, Kolkata
31	DAV Centenary College, Faridabad	68	Queen Mary College, Hyderabad
32	Roots Degree College, Hyderabad	69	Teerthanker Mahaveer Institute of Management & Technology, Moradabad
33	Chitkara Buisness School, Patiala, Punjab	70	ISBM University, Chattisgarh
34	St. Xavier's College, Mapusa, Goa		
35	JIS College of Engineering, Kalyani, West Bengal		

TOP EMERGING BBA INSTITUTES

1	School of Business, Galgotias University, Greater Noida	6	Allenhouse, Kanpur
1	GD Goenka University, Gurgaon	7	School of Commerce and management studies – Dayananda Sagar University, Bengaluru
2	Gitarattan International Business School, Delhi	8	Apeejay Institute of Management & Engineering Technical Campus, Jalandhar
3	Gitam Hyderabad Business School, Hyderabad		
4	Avanathi Degree & Pg College, Hyderabad		
5	Ajeenkya DY Patil University, School of Management, Pune		

Rankings are purely arrived based on the Institutes participating in the survey.

TOP PRIVATE INSTITUTES**Rank Name**

- 1 Amity School of Business, Noida
- 2 Prestige Institute of Management, Gwalior
- 3 Prestige Institute of Management, Indore
- 4 St. Joseph College of Commerce, Bangalore
- 5 Gobi Arts & Science College, Erode, Tamil Nadu
- 6 Goswami Ganesh Dutta Sanatan Dharma (Ggdsd) College, Chandigarh
- 7 Jagan Institute of Management Studies, Sec 5, Rohini, Delhi
- 8 The Bhawanipur Education Society College, Kolkata
- 9 Institute of Management Studies, Ghaziabad
- 10 Indira College of Commerce And Science, Pune
- 11 Manav Rachna International Institute of Research And Studies (MRIIRS), Faridabad
- 12 ICFAI Business school, Hyderabad
- 13 Jagannath International Management School, Kalkaji, Delhi
- 14 GLA University, Mathura
- 15 Symbiosis Center of Management Studies, Noida
- 16 MIT Arts, Commerce & Science College, Pune
- 17 Chandraprabhu Jain college of higher studies and school of law, Delhi
- 18 Narula Institute of Technology, Kolkata
- 19 Dayananda Sagar Business Academy, (Dayananda Sagar B-School), Bengaluru
- 20 Dayananda Sagar College of Arts, Science And Commerce, Bengaluru
- 21 Presidency College, Bangalore
- 22 Jagannath International Management School, Vasant Kunj, Delhi
- 23 Balaji College of Arts, Commerce And Science, Pune
- 24 Asian School of Business, Noida
- 25 Chandigarh Business School of Administration, Punjab

Rank Name

- 26 Dnyanprassarak Mandal's College & Research Centre, Goa
- 27 DAV Centenary College, Faridabad
- 28 Roots Degree College, Hyderabad
- 29 St. Xavier's College, Mapusa, Goa
- 30 JIS College of Engineering, Kalyani, West Bengal
- 31 Sri Ramakrishna College of Arts And Science for Women, Coimbatore
- 32 National Academy of Event Management & Development (NAEMD), Mumbai
- 33 Sri Shikshayatan College, Kolkata
- 34 Prestige Institute of Management, Dewas, Madhya Pradesh
- 35 Indian Academy Degree College-Autonomous, Bengaluru
- 36 Kristu Jayanti College, Bangalore
- 37 Tula's Institute of Engineering & Management College, Dehradun
- 38 International School of Management, Patna
- 39 Kamrah Institute of Information Technology, Gurgaon
- 40 Shri Shankaralal Sundarbai Shasun Jain College for Women, Chennai
- 41 Kongu Arts And Science College (Autonomous), Erode
- 42 The Bhopal School of Social Sciences, Bhopal
- 43 Institute of Management Studies, Noida
- 44 Tecnia Institute of Advanced Studies, Delhi
- 45 Lingaya's Lalita Devi Institute of Management And Sciences, New Delhi
- 46 Rosary College of Commerce & Arts, Goa
- 47 Parul Institute of Business Administration, Vadodara
- 48 Indian Institute of Management And Commerce, Hyderabad
- 49 Universal Business School, Mumbai
- 50 Institute of Finance And International Management (Ifim), Bengaluru

TOP PLACEMENT INSTITUTES

- 1 Amity School of Business, Noida
- 2 Institute of Management Studies, Ghaziabad
- 3 Maharaja Surajmal Institute of Technology, New Delhi
- 4 Center for Management Studies (CMS) - Jain University, Bangalore
- 5 Rosary College of Commerce & Arts, Goa
- 6 Manav Rachna International Institute of Research And Studies (MRIIRS), Faridabad
- 7 Prestige Institute of Management, Gwalior
- 8 ICFAI Business school, Hyderabad
- 8 Jagannath International Management School, Kalkaji, Delhi
- 9 GLA University, Mathura
- 10 IMS Unison University, Dehradun
- 10 Asian School of Business, Noida
- 11 Apeejay Stya University, School of Management Studies, Gurgaon
- 12 Jagan Institute of Management Studies, Sec 5, Rohini, Delhi
- 13 The Bhawanipur Education Society College, Kolkata

TOP PLACEMENT EMERGING

School of Business, Galgotias University, Greater Noida

TOP PRIVATE UNIVERSITIES

- 1 Amity School of Business, Noida
- 2 SVKM's NMIMS Anil Surendra Modi School of Commerce, Mumbai
- 3 KIT School of Management, Bhubaneswar
- 4 MIT WPU, Pune
- 5 Manav Rachna International Institute of Research And Studies (MRIIRS), Faridabad
- 6 Apeejay Stya University, School of Management Studies, Gurgaon
- 7 Center for Management Studies (CMS) - Jain University, Bengaluru
- 8 GLA University, Mathura
- 9 IMS Unison University, Dehradun
- 10 Chitkara Business School, Patiala, Punjab

TOP PERCEPTUAL INSTITUTE

- Institute of management Technology, Ghaziabad
 St. Xavier's College, Kolkata
 St. Xavier's College, Mumbai
 Ness Wadia college of commerce, Pune
 Narsee Monjee College of Commerce and Economics, Mumbai
 Mithibai college, Mumbai
 Loyola College, Chennai
 Birla Institute of Technology, Patna

THE KNOWLEDGE REVIEW™

www.theknowledgereview.com

INDIA

Education. Innovation. Success



VOL-4

APRIL - 2019

ISSUE-2



TECHNO INDIA UNIVERSITY,
WEST BENGAL IMPARTING KNOWLEDGE DRIVEN
EDUCATION OF THE HIGHEST QUALITY

MIT Arts, Commerce and Science College



Rendering a Creative Academic Environment to Nurture Talent for Development of Professional Skills

The institute aims to deliver world-class learning facilities with an excellent ambiance for academics and research conjugated with a vibrant environment for honing the extra and co-curricular skills.



MIT Arts, Commerce and Science College, Alandi (D), Pune, was established in 2007 under the aegis of Maharashtra Academy of Engineering and Educational Research (MAEER) Pune. The founder of the MIT group, Prof. (Dr.) Vishwanath Karad took an initiative to impart quality education with easy access to the young generation in the rural area and the mission for excellence in education. The college started with only 17 students in BCA course, whereas in 2019, it has grown to 1838 students in seven different courses catering to the dynamic need of diversity of education in various fields. MIT has an excellent reputation as a leader and is a pioneer in spreading education to a wide community with its rich academic and

cultural heritage, which contributes to developing noble citizens to serve society.

Top-Notch Infrastructural Facilities

The college campus spreads over 4 acres in a beautiful and peaceful atmosphere at pilgrim place of Alandi near Indrayani River where Saint Dnyaneshwar, the poet and philosopher, devoted his life in establishing rationality of reason. The efforts are made by the institute to create a world-class infrastructure with latest technological advancements. Smart classrooms with a spacious place, hygienic washrooms, purified drinking water, canteen, high-quality surveillance CCTV cameras, ladies room, sports ground, digitalized

library, well-equipped computer labs with internet center, and so on are provided to the students.

Pursuing Academic Excellence

MIT primarily focuses on bringing excellence in education and research. The college is continually focusing on the holistic development of students. It actively helps all students to use their skills and knowledge to perform well in college so that they may also perform professionally in the industrial workplace. The college offers various facilities to the students including:

- Providing continuous mentorship to the students, where students can interact with the mentor and discuss their problems. This strategy is

extremely helpful in resolving many issues like problems at home, low parental support, and low confidence.

- The college provides financial support to the students via merit scholarship and helps financially weaker section of students by allowing them to deposit fee in installments.
- Conducting remedial classes for slow learners to align them with the rest of the students of the class.
- Conducting bridge courses to connect the gap between acquired knowledge and prerequisite knowledge for the course and to overcome technical difficulties.
- Providing soft skills training for the students' development.

The Road to Glory

The institute has achieved numerous laurels for its dedicated endeavors. The various landmarks that it has achieved throughout its illustrious journey include:

1. **Best College Award (University Level)** for three consecutive times (2015-16, 2016-17, 2017-18) by Savitribai Phule Pune University, Pune.
2. Its Department of Computer Application was awarded 2nd Rank in Pune and 18th rank in India by India Today – MDRA for the year 2018.
3. Its Department of Computer Science has received 3rd rank in Pune and 94th in India by India Today – MDRA for the year 2018.

Collaborative Endeavors

The college has signed MOUs with many institutions to ensure academic and career

enhancement of the students. These institutions include:

- **College of Computer Accountants**- Add on courses on Tally ERP and advanced excel
- **Cognitive Exchange organization** based out of Folsom, California, USA- Every Saturday, sessions are conducted on how to deliver a speech and how to improve leadership quality and communication
- **IGATE Global Solutions Ltd.**- Faculty development program for teachers.
- **Vishwakalyan Bahu Uddeshhiya**- Conducted computer training and awareness program.

Career Development Initiatives

The college has a very efficient Training and Placement Cell. It helps students to understand, realize, and develop employability skills and provides training for interview techniques, aptitude test, and self-presentation. The institute's Entrepreneur Development Cell aims to develop the spirit of entrepreneurship among the students. Various activities of this cell include creating awareness programs, mentoring students, and assistance in receiving financial support for start-ups.

MIT also focuses on motivating and guiding students for various competitive examinations such as MPSC, UPSC, Bank PO, and so on. Additionally, it also conducts guest lectures by alumni and government officials, and inter-college competitions based on topics related to competitive examinations. Moreover, the Research and Development Cell motivates students to participate in conferences/seminars and present & publish their research papers in conferences and journals.



The Responsive Principal

Prof. Dr. B. B. Waphare is the **Principal** of MIT. He is an academic visionary who has been enthusiastically and innovatively working in imparting quality education. He aims to inculcate research aptitude, social, and moral values which can support to develop the young generation with potentials to compete with global challenges. Having 22 years of research experience, Dr. Waphare has more than 90 research publications in reputed international and national journals. He has worked as a reviewer for various journals. He has attended and participated in more than 90 international, national, and state level conferences, seminars, and workshops.

www.theknowledgereview.com

THE KNOWLEDGE REVIEW™

Education. Innovation. Success

INDIA

VOL 4

APRIL - 2019

ISSUE-6

THE 10 BEST
EDUCATIONAL
INSTITUTES OF
COMMERCE IN INDIA,
2019

SRM AP UNIVERSITY

Providing Opportunities for Lifelong Learning



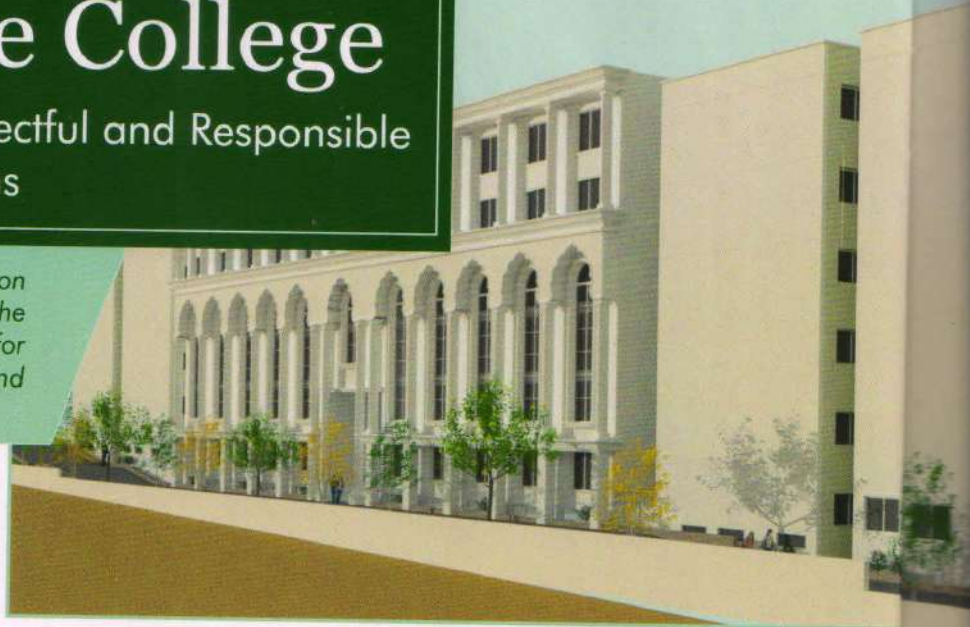
MIT Arts, Commerce and Science College

Dedicated to Building Respectful and Responsible Citizens

To aspire and strive for excellence in education and research, by developing and sharpening the intellectual ability and potential of learners for the welfare and prosperity of society and stakeholders.

With a vision to develop an excellent ambiance for academics and research conjugated with a vibrant environment to match the challenges of the competitive world, **MIT Arts, Commerce and Science College (MITACSC)**, Alandi (D), Pune was started in 2007. It was established under the aegis of Maharashtra Academy of Engineering and Educational Research (MAEER), Pune. The founder of the MIT group *Prof.(Dr.) Vishwanath Karad* imparted quality education with easy access to the young generation in a rural area and the mission for excellence in teaching. The government of Maharashtra recognized MITACSC and it is affiliated to Savitribai Phule Pune University. The college has an admirable reputation as a leader and is a pioneer in spreading education to a wide community with its rich academic and cultural heritage. Consequently, it contributes to develop noble citizen for society.

The college, Principal and staff members have received various prestigious awards, prizes, and honors for their magnificent contribution in imparting knowledge, inculcating life skills, developing research skills and providing the finest placements. The most prominent are; *Education Excellence Award* for best placements amongst Educational Institutions in Pune, Maharashtra; *Best College Award* *Institute got the recognition* by Savitribai Phule Pune University for three consecutive years 2015-16 & 2016-17 in rural area and 2017-18 at University level. In 2018, college received the ranking by *India Today MDRA Best Colleges*



Ranking 2018. The college takes pride for its achievements, present progress, and holds responsibility for its bright future.

The college offers undergraduate and postgraduate programs like - *Bachelor of Commerce, Bachelor of Business Administration, Bachelor of Business Administration-International Business, Bachelor of Administration- Computer Application, Bachelor of Science, Bachelor of Computer Science and Master of Computer Science.*

The Ideal Campus

Spread over 4 acres in a beautiful and peaceful atmosphere, the college resides at pilgrim place of Alandi near Indrayani River. Faculties in this harmonious environment are engaged by passion, dedication, innovation, and experience. They delegate knowledge through active learning, field visits, experts' guidance, training programs, research guidance and support, and continuous assessment.

The excellent infrastructure includes the latest technological advancements. The lengthy list includes; smart classrooms with spacious volume, hygienic washrooms, purified drinking water, canteen, high quality surveillance CCTV cameras, parking, eco-friendly environment, sports ground, digitalized library, well equipped computer labs with internet center, Wi-Fi facility, electronics, physics, chemistry and English language labs.

The college provides National Service Scheme, Cultural group NAADBRAHMA, Earn and Learn Scheme, Students Development Cell, Competitive Examination Cell, Cognitive Exchange California. Further, it provides merit scholarship for meritorious pupils who are at the monetary disadvantages.



Successful Alumni

The college has a long list of its alumni that have successfully shaped their careers and today are at the top positions in their respective fields. Alumni's have groomed themselves in Entrepreneurial career as well namely; *Shantanu Lakal, Balaji Lokhande, Akshay Bhondve, Praveen Jadhav, Akash Bhosale, Mahavir Bafna, Suraj Borade, Prasad Deshmukh, Vishal Jadhav, Atul Rakshe, Vivek Kumar.*

Some other successful in their profession are:

Kiran Gaikwad; *Senior Executive*, Pranay Jaiswal; *Operation Head*, C Sagar; *Merchant Acquisition Analyst*, Surekha Waglekar; *Executive Officer*, Shivpreet Kaur; *Executive*, Salaman Shaikh; *Technologist Analyst*, Vijay Dhopate; *Associate Cloud Manager*, Amit Menon; *Process Excutive*

Fabricating Industry-Ready Graduates

The training and placement cell at MITACSC helps students understand, realize, and develop employability

skills. It offers guidance for interview techniques, aptitude test, and self-presentation and students receive maximum industrial exposure till their placements. This cell has won diverse achievements and has been awarded the *Best placement among Education institution* and Wipro has recognized MITACSC as an "Outstanding contribution to Industry-Academia Partnership".

The college has collaborations with all the industrial sectors that bridge the gap between academics and industrial expectations. The placement cell encourages, guides, and supports budding entrepreneurs and shapes the future of students, transforming them into competent professionals. The college also has Entrepreneurship Development Cell and Innovation Cell for developing Entrepreneurial Skills and creativity among the students, Remarkable Achievement – Rajnish Kumar.

Promoting Commerce Education

The college will continue to provide an exceptional education and is keen to

As the Principal of the college, Professor Dr. B.B. Waphare, an academic visionary has been enthusiastically and innovatively working to impart quality education, inculcate research aptitude, social and moral values which support to develop young generation with potentials to compete with global challenges.

Dr. Sunil Karad, Executive Director & Trustee believes that education must help aspirers in seeking solutions to problems that may seem unsolvable and endeavor to answer questions that threaten to elude students.

deliver the latest commerce education. It has formed steps in the holistic development of the students through curricular, co-curricular, and extracurricular activities. It is setting up special guidance programs to succeed in competition, to gain deep knowledge, to develop employability potentials, and to meet with the industrial requirements. Active forums are also on an expansion to give exposure to scholars' talents and skills. The placement is evolving to yield the finest placement to the students with mentors for online courses launched by IIT and UGC. IKR