



MAEER's

**MIT Art's Commerce and Science College
Alandi (D) Pune 412105**



Perspective Plan

2015-2020

Introduction:

MAEER was the first step of the revolution in the education scenario of Maharashtra. Maharashtra, the third largest state in the country, with a rich heritage, known as the land of saints and also, the one which gave great leaders to the world had yet to progressed in the field of education.

This realization embarked the journey of MAEER - in 1983 with the establishment of Maharashtra Institute of Technology (MIT), one of the first private engineering college in Maharashtra which still remains the flagship institute of the group.

With the sole objective of meeting the long felt need of a centre of scientific and educational research, which would meet the challenges of the present and the future technical advancements of the fast changing world, MIT Group of Institutions was established as a society and charitable trust. Since then, the MIT Group of Institutions have grown leaps and bounds and has made a strong impact in the field of education throughout the country. With more than 10 campuses in the state of Maharashtra covering almost 1000 acres of area, the MIT Group provides education in the fields of Engineering, Medicine, Pharmacy, Marine Engineering, Insurance, Distance Education, Telecom Management, Lighting, Design, Food & Technology, Retail Management, Masters in Business Administration, School of Government and also School Education. At any given point of time, more than 50000 students are pursuing various courses all over our 65+ institutes. With this statistics, the MIT Group is almost a big University by itself.

It is worth mentioning that in appreciation of the work carried out by MAEER's MIT, Pune under the banner of World Peace Centre in championing the cause of promoting the Value Based Universal Education System for spreading the message of peace in the society, based on the appropriate blending of science, technology and spirituality, UNESCO, Paris bestowed the World Peace Centre, MAEER's MIT, Pune, India with an UNESCO Chair for Human Rights, Democracy, Peace and Tolerance on 12th May 1998.

MIT Group believes in developing the overall personality of its students in order to create future responsible global citizens. Hence, imparting training is done based on the five principles of the



MIT's holistic development policy –

1. To develop a spirit of inquiry and achieve Academic Excellence
2. To inculcate a sense of discipline and character
3. To develop a spirit of Social Commitment.
4. To promote a Culture of Peace in society.
5. To build a strong Industry – Institute Interface

MIT has traversed the path of rapid development in education, along with the nation, often responding positively to changed needs and at times initiating significant changes. We have evolved in twenty-six years by overcoming tough hurdles set more by limitations of thinking in that era, rather than lack of ability, to arrive at a point where we can explore the vastness of knowledge and possibilities on the global canvas. At MAEER's MIT, it's never about which of our institutes you choose to study in, it is more about how and where you reach in life thereafter.

About the College:

With a vision to develop an excellent ambiance for academics and research conjugated with a vibrant environment to meet the challenges of the fiercely competitive world, the founder of MIT group Prof.(Dr.) Vishwanath Karad took initiative to impart quality education with easy access to the young generation in rural area and the mission for excellence in education started under the name of MIT Arts, Commerce and Science College, Alandi(D), Pune, in 2007 under the aegis of Maharashtra Academy of Engineering and Educational Research (MAEER) Pune, affiliated to Savitribai Phule Pune University and recognized by the Government of Maharashtra.

The college is located in Alandi, the holy land of Saint Dnyaneshwar, the poet and philosopher who had devoted his life in establishing rationality of reason. With this great heritage, the college also endeavors to delegate knowledge in a peaceful environment by committed, passionate, dedicated, innovative and experienced faculty through active learning, field visits, experts' guidance, training programs, research guidance and support, and continuous assessment. The efforts are made to create a world-class infrastructure with latest technological advancements.



MIT ACSC has an excellent reputation as a leader & pioneer in spreading education to wide community with its rich academic and cultural heritage which contributes in developing noble citizen to the society. It has committed to engage alumni, students, faculties and other stakeholders collectively to achieve the educational goals.

Vision Statement:

To develop the Institute into a world class learning centre with an excellent ambience for academics and research conjugated with a vibrant environment for honing the extra and co-curricular skills of all its stakeholders to enable them to meet the challenges of the fiercely competitive world.

Mission Statement:

To aspire and strive for excellence in education and research, by developing and sharpening the intellectual ability and potential of learners for the welfare and prosperity of society and stakeholders.

OBJECTIVES

- To give best career opportunities to our students by enhancing their employability and entrepreneurship qualities.
- To provide a creative academic environment to tap and nurture talent for development of professional skills.
- To inculcate moral values and a sense of discipline in keeping with the glorious heritage of the nation.
- To impart quality education by working towards the all round personality development of the students.
- To cultivate a research culture by guiding and encouraging the faculty.

The college offers undergraduate and postgraduate programs- Bachelor of Arts, Bachelor of Commerce, Bachelor of Business Administration, Bachelor of Business Administration- International Business, Bachelor of Administration- Computer Application, Bachelor of Science, Bachelor of Science-Computer Science, and Master of Science-Computer Science.

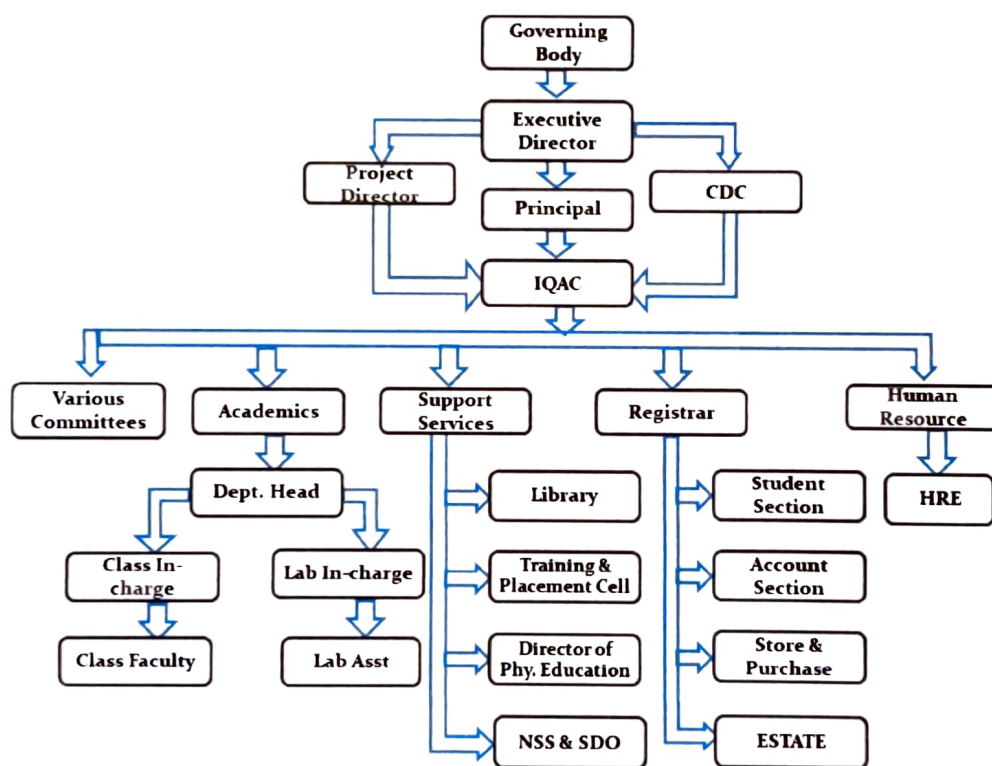


The college recurrently organizes curricular, co-curricular and extra-curricular activities for the holistic development of the students. The advanced resources, facilities and special guidance programs are made available to succeed in competition, to gain deep knowledge, to develop employability potentials and to meet with industrial requirements. The college also provides the best placement opportunities to the students.

Governing Organizational Chart

Organizational Chart

MIT | Arts, Commerce & Science College



College Profile:

1	Name and Address of the college / Institution :	MIT Arts, Commerce and Science College, Dehuphata, Alandi(D),Pune-412105.
2	Year of establishment :	2007
3	Status of the college:	Non-aided- Permanent
4	Name of the Principal:	Dr. B. B. Waphare
5	Location of the college:	Rural
6	Area of the campus in acres:	4.087 acres
7	Total built-up area in sq.mt	9017 Sq.mt
8	Type of college:	Co-education
9	Affiliated to:	Savitribai Phule Pune University
10	Name of the Management:	Maharashtra Academy of Engineering and Educational Research
11	Name of the Chairman / Secretary	Prof. Dr. Vishwanath D. Karad
12	Local management Committee :	College has Local Management Committee

Course Offered by the College:

Sr. No.	Teaching Courses	Title of Course	Intake Capacity
1	Under Graduate Courses	B.Sc (Computer Science)	240
		BCA/BBA(CA)	160
		BBA	160
		BBA(International Business)	80
		B.Com	120
		BA	120
2	Post Graduate degree courses	M.Sc (Computer Science)	60
		MCA(Commerce)	60



Academic Planning & Implantation

Academic Calendar



Departmental Meeting	
Workload assessment	Workload Distribution



Time Table



Teaching Plan



Implementation	
Innovative Teaching Learning Methods	Continuous Evaluation

Monitoring By
IQAC



Perspective of MIT ACSC:

MAEERS MIT Arts Commerce & Science College was established as a learning centre in 2007 with a motive to facilitate learning opportunities to rural students and to impart knowledge for their development. The institution strives towards the excellence by developing top-notch learning centre with unbeaten infrastructure for academics and research aspirants for their overall development. It firmly believes in the principle of inclusion and equal opportunity for all. For this purpose the institutions plans with different strategies to achieve its goals which reflects in institutional perspectives plans. The growth of student's capacity increased year by year with a view to the management taken initiative and made a prospective strategic plan in the view of growth of college and need of college.

The College is primarily led by the Principal. However, the leadership works at two levels, first at the management level and second at the College level. At the management level, the College is led by the Chairperson of the Governing Body. At the College level, it is led by the Principal.

The action plans are emanated and formulated at the College level and finalized at the management level. Under the leadership of the Principal, action plans so formulated are allocated to respective implementing departments and thus becomes a part of College strategic plan. The concerned head along with team is responsible for successful implementation of the plan under the overall guidance and direction of the College level leadership.

Strategic Plan 2015–2020 identifies the following targets:

1. Develop, strengthen, and implement academic programs that are responsive to the MIT ACSC vision & mission and are systematically reviewed for sustained quality, relevance, and excellence to meet the challenges of competitive global environment.
2. Enhance institute infrastructure to accommodate increase in intake, research, economic development, technological advancement contribute to an enhanced quality of life in the region.
3. Promote and sustain a campus environment that supports a high quality of life, learning and research culture that positively impacts retention through graduation and produces



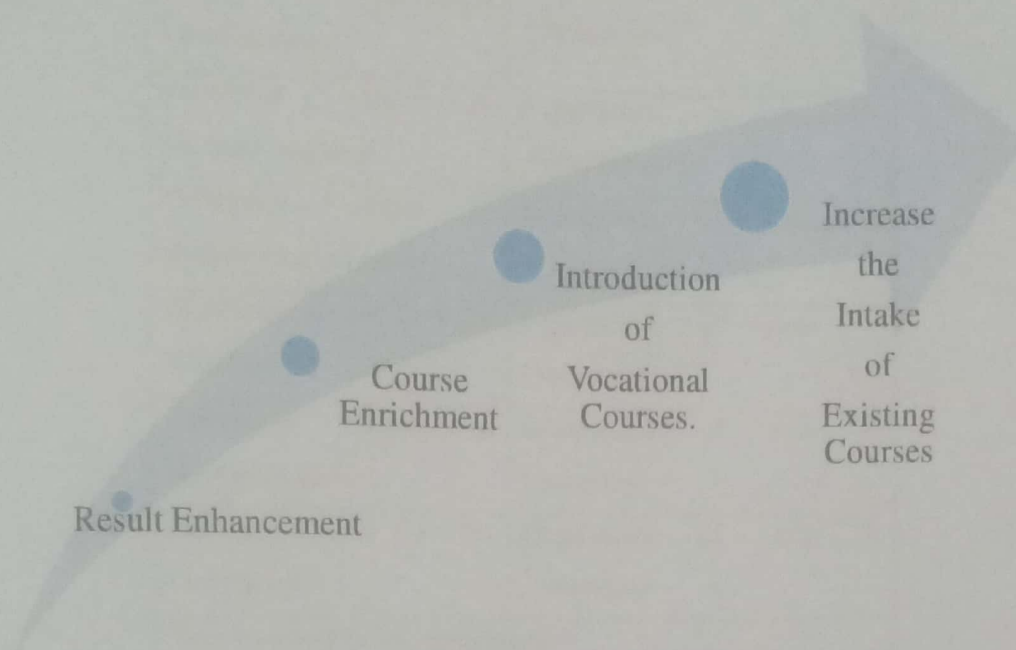
knowledgeable and culturally competent citizens able to lead effectively and compete globally.

4. Improve academic interaction and participation of institutes / universities of national eminence in order to facilitate learning, innovation and research.

Perspective Plan of the college divided in the Following Goals: The Action Plan from 2015-16 to 2019-20 is a cohesive step to sustain in a complex and dynamic environment. It forms a bridge between the significant achievements and our vision into the future. The Action Plan builds on previous work to provide learners with the skills they need to prosper. The following is the action plan from the academic year 2015-16.



ACADEMIC GOAL



Goal	Action plan	Responsibility
Result Enhancement	Institute is looking forward to achieving 70% result of all the courses.	Respective Departments
Course Enrichment	New Course (BCA Science)	Department of Computer Science
	Specialization is to be introduced in B.Com (Business Entrepreneurship)	Department of Arts & Commerce
	Graduate Courses in Physics, Chemistry, Mathematics and Electronics.	Head of Institution & Management

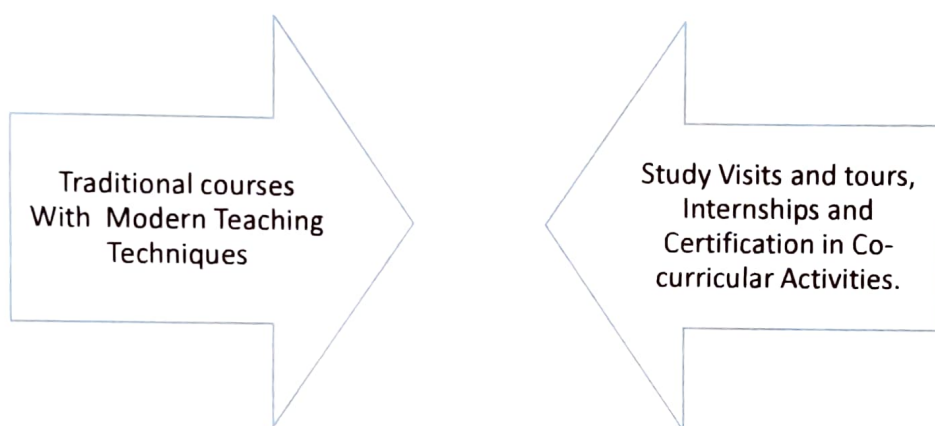


Vocational courses	Certificate course in Android Application Development	Department of Computer Application
	Certificate course in German language	Department of Business Administration
	Certificate course in Python Programming	Department of Computer Science
	Certificate course in Tally ERP9.0 GST	Department of Arts & Commerce
	Certificate course in Human Rights	Department of Arts & Commerce
	ADD-on Course on CA-Foundation	Department of Arts & Commerce
	New Courses to be Introduced	
Certificate and Diploma Courses are to be introduced.	Respective Department	
Certificate course in Share Trading	Department of Business Administration	
Certificate course in Hardware Networking	Department of Computer Science	
Certificate course in Financial planning and control.	Department of Arts & Commerce	
Certificate course in data Mining and Hadoop	Department of Computer Application	
Certificate Course on English Enhancement Programme	Department of Computer Science	
Certificate Course in	Department of Computer	



	Japanese Language	Application
Increase the intake of Existing Courses	One Division of Bachelor of Commerce	Department of Arts & Commerce

TEACHING LEARNING



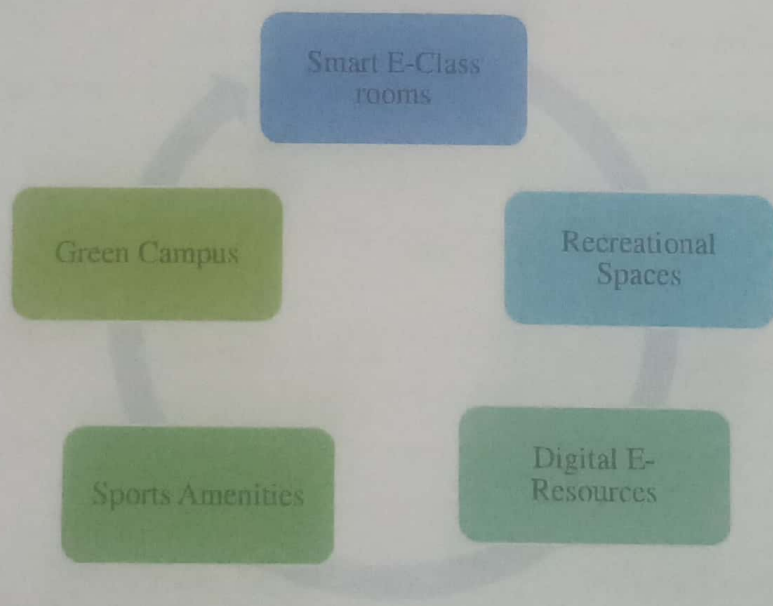
Keeping the current scenario in mind there is need of blending of modern teaching techniques with traditional courses. The institution is taking effort to make this happen by providing the students with the exposure so that they can acquire different skills required in market for their professional career development through practical experience. Practical experience can be gained through study visits and tours, internships and field visits etc.

Goal	Action plan	Responsibility
ICT Based Teaching	Application of Innovative ICT Teaching tools	Individual faculty
Applied teaching learning	Study tours	Respective Department
	Field Visits	
	Internship Programme for Post Graduate Program	Placement Cell



	Faculty Training	Head of Institution & Management
Use of Open Source Software	Use of Google services	Respective Department
	Use of MOODLE	
	Provide online and offline teaching	
Certification Courses	NPTEL Courses	Respective Department
	Microsoft	
	Other Certification	
Qualification Enhancement	Ph.D. thesis Submission	Individual Faculty
	Ph.D. Registration	

INFRASTRUCTURE



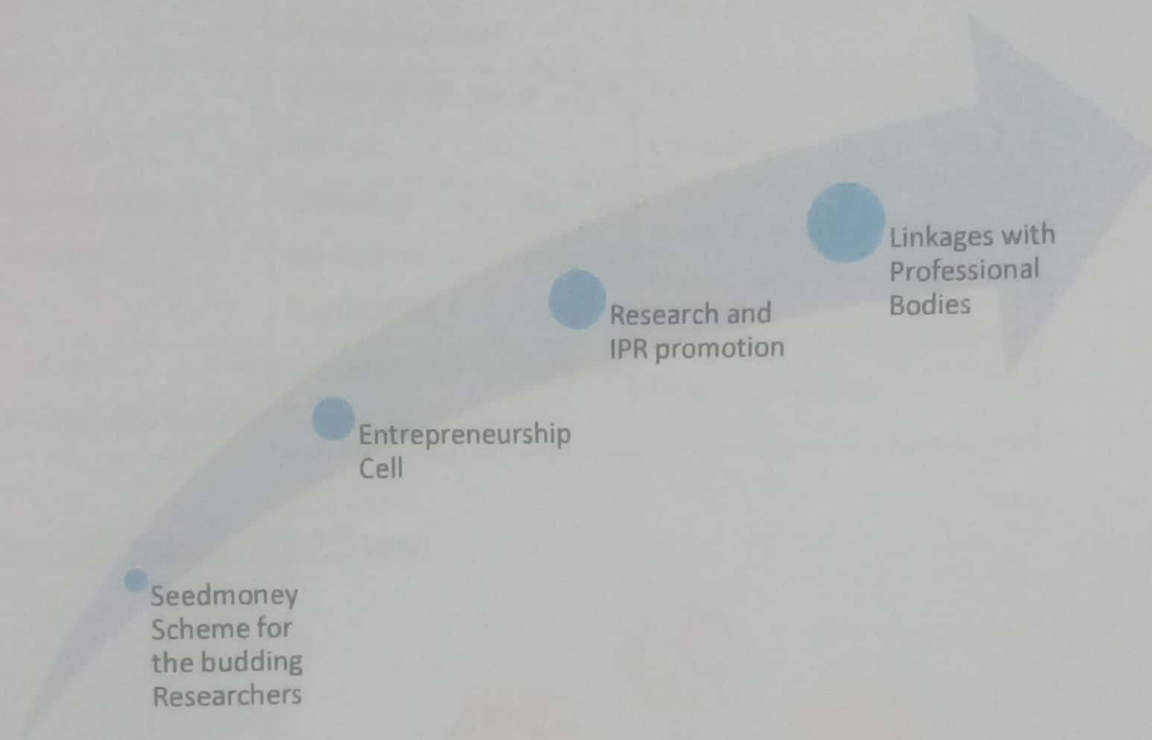
To achieve academic and teaching learning goals suitable infrastructure is required to carry out different curricular, co-curricular and extracurricular activities. The institution plans to have infrastructure for education, modern classrooms and laboratories.



Goal	Action plan	Responsibility
Audits	Academic & Administrative Audit	IQAC
Digital E-Resources	E-library	Department of Library
	Wi-Fi-Enabled Campus	Head of Institution & Management
	Server based access	Head of Institution & Management
Smart E-Class Rooms	All Classroom with Projector and LAN Connectivity	Head of Institution & Management
	Well equipped Commerce Lab and Language Lab	Head of Institution & Management
	Audio-Visuals Teaching aids	Head of Institution & Management
Recreational Spaces	Boys and Girls Common room	Head of Institution & Management
	Seminar Hall with advanced technology	Head of Institution & Management
Sports Amenities	Well Equipped Gymnasium	Head of Institution & Management
	Indoor Game hall	
	Basketball Court	
Green Campus	Solar Panel	Head of Institution & Management
	CCTV Camera	
	Lush Green Campus	
	Rain Water Harvesting	
	E-Waste Management	
	Garbage Management	



RESEARCH AND PROFESSIONAL DEVELOPMENT



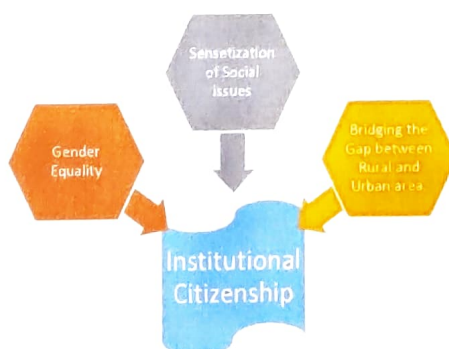
Research is the most important domain in higher education. To nurture the budding researchers the institution plans to provide both financial and non financial support to the researchers.

Goal	Action plan	Responsibility
Seed money Scheme for the budding Researchers.	Implementation of research grant by the Institution for faculties research work.	Head of Institution and Management
	Provision of grant by the Institution to innovative research work.	Head of Institution and Management
	Faculty research Contribution in reputed	Individual faculty



	journals	
Entrepreneurship Cell	Establishment of Entrepreneurship Cell	Head of Institution
	Establishment of Incubation center.	Head of Institution
Research Development Software	Workshop on use of SPSS software	Research & Development Co-ordinator
	Workshop on use of Intellectual Property Rights(IPR)	Research & Development Co-ordinator
Linkages with Professional bodies	Linkages with Professional Bodies	Head of Institution

INSTITUTIONAL CITIZENSHIP



Goal	Action plan	Responsibility
Gender Equality	Gender Audit	Head of Institution
	Girls Empowerment	
	Support facilities for girl students	
Sensitization of Social Issues	More Number of Social extension and outreach programmes	Respective Cell and Department



Bridging the Gap between Rural and Urban area.	College has planned to give support hand to Government and Semi-Government Schemes to bridge the gap between Rural and Urban area.	Head of Institution
--	--	---------------------


Dr. B. B. Waphare

Principal.

.....

