

# MIT | Arts, Commerce & Science College

## STUDENT CENTRIC METHODS

### Experiential Learning



**MOCK INTERVIEW**



**Simulations on MATLAB Simulink**



**Students Preparing PCB layout using  
Express PCB Software**



**FIELD WORK/FIELD VISIT**



**ROBOTICS MAKING COMPETITION**



**POSTER MAKING COMPETITION**



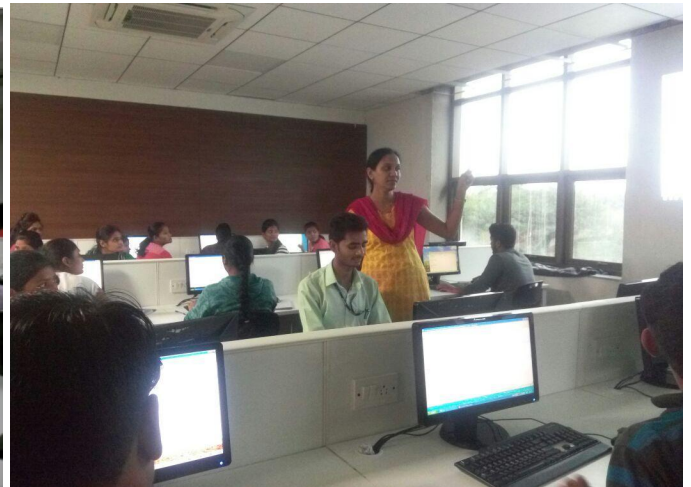
**PROJECT MAKING AND DEMONSTRATION BY STUDENTS**



**MODEL MAKING**



**HANDS ON ACTIVITY ON SOLAR LAMP**

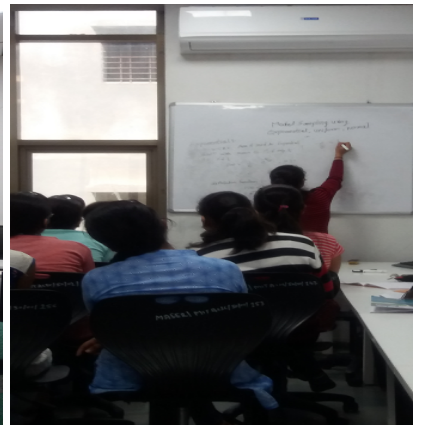
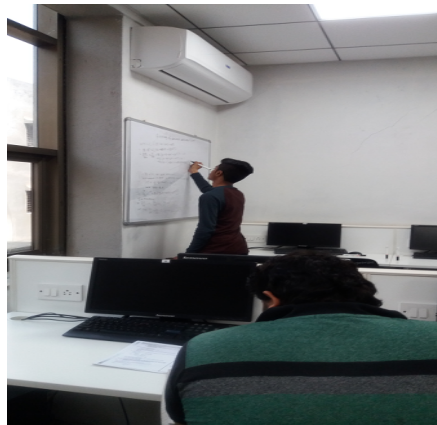
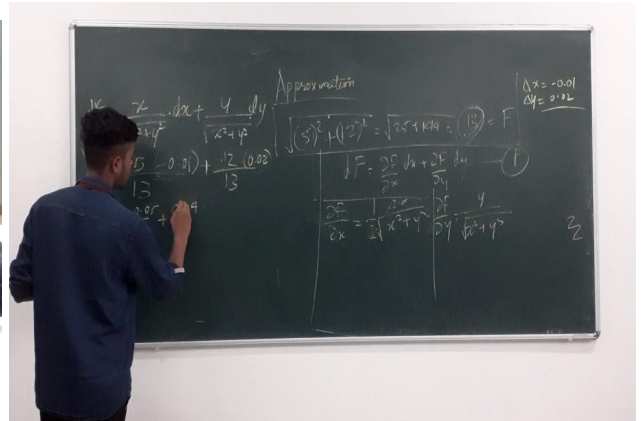


**WORKSHOP FOR STUDENTS**



**HANDS ON TRAINING**

## Participative Learning



## SEMINARS BY STUDENTS



## GROUP DISCUSSION



**ROLE PLAY ACTIVITY**



**PPT PRESENTATION BY STUDENTS**



**BOOK REVIEW**



### GRAPHICAL REPRESENTATION



### GUEST LECTURES BY INDUSTRY EXPERTS



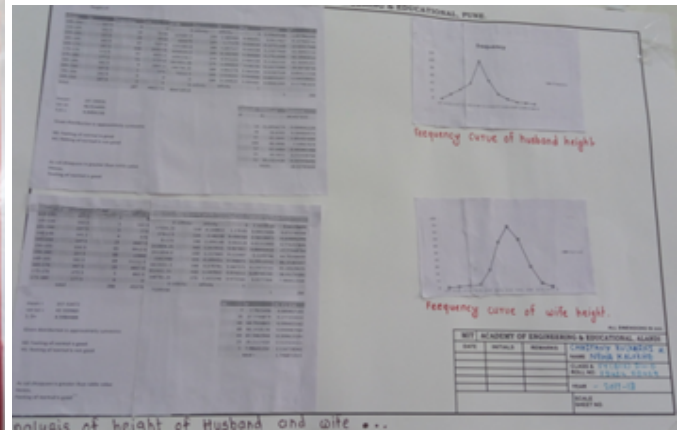
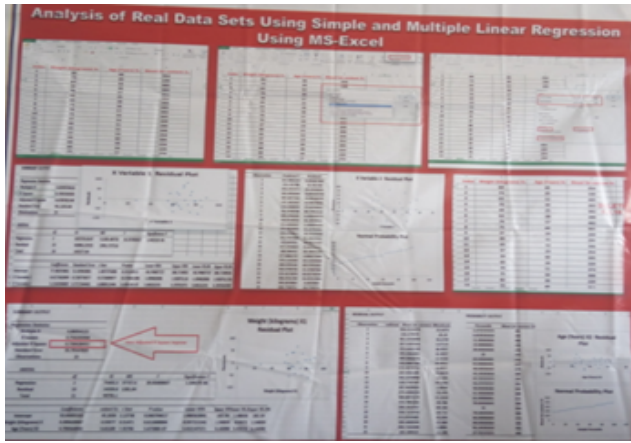
## Problem Solving Methods



## **CLASSROOM QUIZ**



## **STATISTICS QUIZ**



**STATISTICAL ANALYSIS DONE BY THE STUDENTS TO FIND SOLUTION TO VARIOUS PROBLEMS**



**THINK PAIR SHARE ACTIVITY**