

**MAEER's**

**MIT** | Arts, Commerce  
& Science College

(Affiliated to Savitribai Phule Pune University)

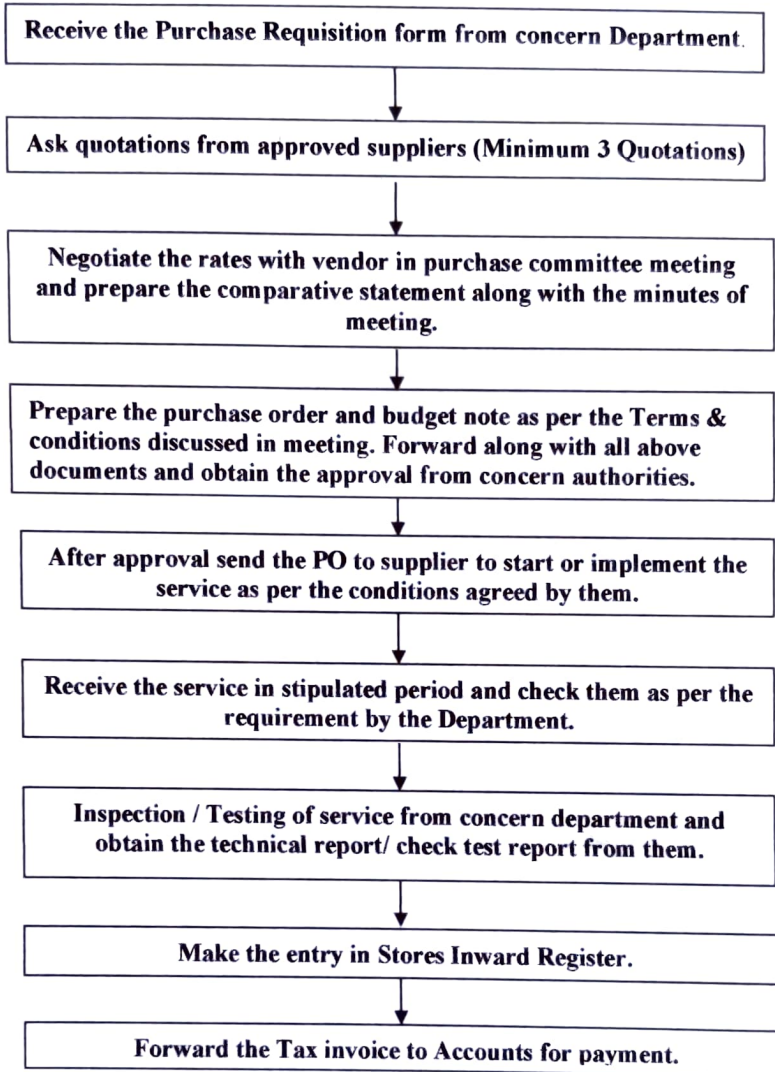


**Policy & Procedure**

**Purchase Committee**

(To be implemented from AY 2007-08)

**MIT ARTS COMMERCE & SCIENCE COLLEGE, ALANDI (D),**  
**WORK ORDER PROCEDURE**




**Prepare & Reviewed By:-**

  
**Mr. Sandeep Rohinkar**  
Registrar & Head - Account  
MIT ACSC Alandi (D).

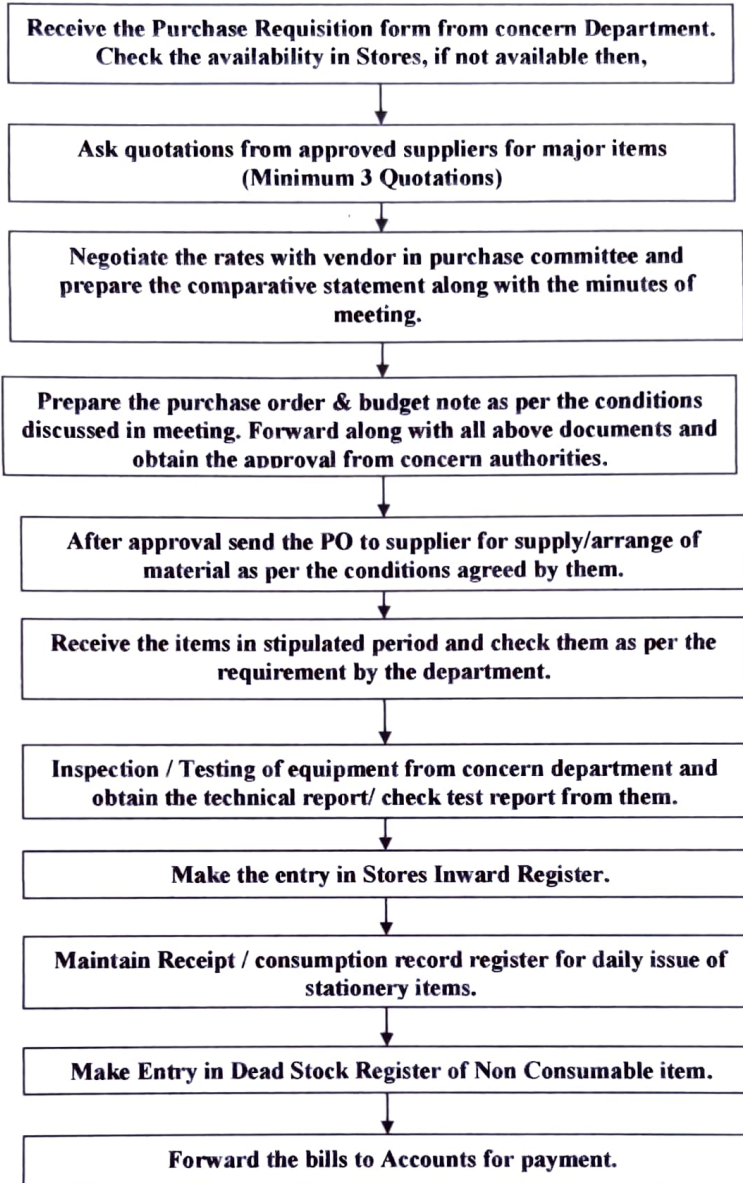


**Approved By :-**

  
**Dr. B. B. Waphare**  
Principal  
MIT ACSC Alandi (D).

**MIT ARTS COMMERCE & SCIENCE COLLEGE, ALANDI (D),**

**PURCHASE ORDER PROCEDURE**




**Prepare & Reviewed By:-**

  
**Mr. Sandeep Rohinkar**  
Registrar & Head - Account  
MIT ACSC Alandi (D).



**Approved By :-**

  
**Dr. B. B. Waphare**  
Principal  
MIT ACSC Alandi (D).